

# The perfect partnership that paved the way for PaveX™

Renowned for its beaches, tropical climate, and 27 surrounding bay islands including Great Keppel, Yeppoon is a coastal town on the Capricorn Coast, located within the Shire of Livingstone, Queensland. Blessed with a string of beaches, shallow coves and low-lying wetlands, Yeppoon is a popular destination for tourists, young families and retirees looking to soak up the Central Queensland sun.

Published in August 2018, the Livingstone Shire Council's *Active Livingstone Strategy* identified a strong desire among locals to connect the Pineapple Coast Rail Trail with the Yeppoon Foreshore. As result, the Livingstone Shire Council committed resources to developing additional linkages to the rail trail, further enhancing the community's connectivity.



In December 2019, the Livingstone Shire Council partnered with **Tandy Concrete**, **Fibercon** and **ICT Concreters Warehouse** to design and construct a vital 2.2km stretch of 2.5m wide shared bikeway along Barmaryee Road. The goal? To provide a safe and accessible shared-use pavement that connects recreational walkers, cyclists and mobility-impaired locals with Yeppoon's newly constructed Barmaryee Sportsground facilities. The challenge? CORROSION! If there is one problem with stunning beaches and low-lying wetlands, it is the damage that corrosion can cause to the concrete joints in surrounding pavements, which results in spalling and potential tripping hazards. To help mitigate the impact of corrosion, the concrete mix specified by the Livingstone Shire Council was a Fibercon MPP design - a combination of high performance macro structural synthetic polypropylene fibre and defibrillated polypropylene fibres, providing both micro crack control in hardened concrete and plastic shrinkage control in early age concrete. The N32/20 mix supplied by Tandy Concrete - coupled with 4.6kg of MPP Fibres to 1 cubic metre of concrete - eliminated the need for traditional steel mesh along the 2.2km span of the Barmaryee Road Shared Path.

But what about the joints? Traditional pre-galvanised Galvabond® steel expansion joint systems supplied with steel dowels – eventually deteriorate, exposing the steel to salt water, potentially causing rust-related joint failure. Steel joints were a definite “no-go” for the corrosion-free requirement of the Barmaryee Road project. Having established a strong working relationship with the Livingstone Shire Council, Fibercon and ICT since the Lammermoor Beach Pavement project back in August 2017, the timely launch in early 2020 of Danley's game-changing residential pavement system called PaveX™ - nailed the brief. Developed in conjunction with councils and concrete contractors alike, PaveX™ Expanda™ is a lightweight, corrosion-free uPVC expansion joint system with integral load carrying capping that provides a smooth & quiet transition over joints. Modular in design, PaveX™ is fast, safe & easy to use on site. PaveX™ complies with the requirements of AS 3727.1:2016 Residential Pavements.

Continued >

## Project Information

<b>Project:</b>	Barmaryee Road Shared Path
<b>Location:</b>	Yeppoon, QLD
<b>Project Scope:</b>	2.2 km Shared Path: 2.5m W x 100mm D Driveways: 150mm Depth
<b>Council:</b>	Livingstone Shire Council
<b>Concrete Supplier:</b>	Tandy Concrete
<b>Concrete Mix Design:</b>	N32/20 Fibercon MPP Fibres
<b>Distributor:</b>	ICT Concreters Warehouse
<b>Finish Date:</b>	July 2020
<b>Product Used:</b>	Danley™ PaveX™ Expanda™ 100mm Kit





## Project | Barmaryee Road Shared Path

Barmaryee Road was the very first Livingstone Shire Council project where PaveX™ Expanda™ was specified and installed. Understanding the potential for concerns with being an early adopter of new and innovative products, John Hinton – *Supervisor Urban Construction Maintenance* at Livingstone Shire Council recalls that despite the crew's initial apprehension over using something "new and different" – this was short lived, with John adding that:

**"the guys on the job were so impressed with how easily the joints were installed and how much time they saved. Combining this with the uPVC PaveX™ Expanda™ and GFRP dowel system, we will be able to minimise the amount of corrosion in joints and spalling in the concrete in the low-lying wet areas."**

The Livingstone Shire Council's mantra centres on continual improvement in overall service delivery at an operational level for their constituents, delivering best-in-class results – **a vision shared with Tandy Concrete, Fibercon, ICT Concreters Warehouse and ramsetreid.**

The Barmaryee Road Shared Path project was completed in July 2020.

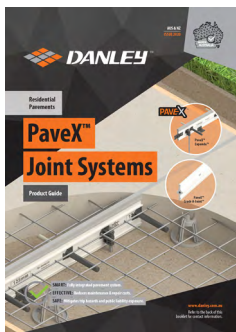
**PAVE<sup>™</sup>X**  
Expanda<sup>™</sup>



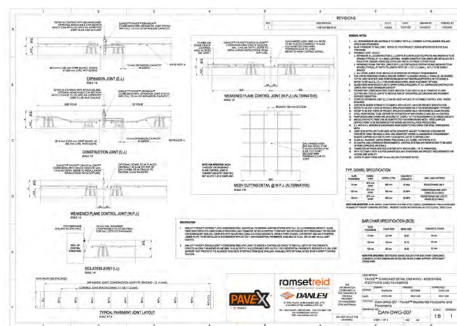
**Corrosion-Free  
Joint System**



**Complies with the  
requirements of  
AS 3727.1:2016**



To learn more about PaveX™, scan the QR code below, or visit us at [danley.com.au](http://danley.com.au)



For councils:  
Update your Master Spec!  
Download the PaveX™ Specification Details by scanning the QR Codes below:



PDF



DWG

Proudly Partnering with:

