

AS/NZS 2425:2015 Compliance



All Danley™ Bar Chairs are manufactured from 100% recycled plastics (or materials).

What is AS/NZS 2425:2015?

AS/NZS 2425:2015 bar chairs in reinforced concrete - product requirements and test methods is a mandatory standard that covers minimum durability requirements for chairs and spacers used in concrete construction. All plastic chairs and spacers used in reinforced concrete construction **MUST** comply with the requirements of AS/NZS 2425:2015.



Are you using AS/NZS 2425:2015 compliant bar chairs & spacers? What is at risk?

- Unsatisfactory manufacture and application of bar chairs and spacers can lead to the misplacement of steel reinforcement.
- This in turn, may compromise structural strength and reduce the durability of reinforced concrete.
- Asset Owners, Engineers, Suppliers and Building Surveyors are responsible for ensuring that compliant products are manufactured, specified and installed on construction projects.

How do we comply?

As a trusted and leading supplier of plastic chairs & spacers, RCS complies with the testing requirements of AS/NZS 2425:2015, by ensuring:

- We conduct ongoing batch testing.
- Test chairs & spacers to strength grade categories of 60kg, 120kg, 200kg and >300kg.
- Pre-load test specimens to 20kg.
- Under pre-load: Chairs <75mm to deflect ± 1 mm. Chairs ≥ 75 mm to deflect ± 2 mm.
- Test chairs at 30°C ($\pm 2^\circ$).
- Apply load to test samples for a minimum duration of 1 minute.
- Deflection under load ± 3 mm.
- After applied load, the final recovered position of the test specimens must be < 2.0 mm.
- All test results are to be recorded and retained for a minimum duration of 2 years.
- Packaging must clearly identify the supplier details, strength rating and batch test traceability.



PROUDLY MADE IN AUSTRALIA.

Danley™ plastic chairs & spacers are manufactured in our ISO 9001 Accredited Facility.



**Australian & New Zealand Standard
AS/NZS 2425:2015 is now mandatory.
Do your bar chairs and spacers comply?**

Non-compliant bar chairs may compromise the structural integrity of concrete.



Every batch of Danley™ chairs and spacers we manufacture are tested in our NATA endorsed facility in Melbourne.



Certificate of Conformance:

Available on request, RCS can provide a Certificate of Conformance for plastic chairs & spacers manufactured in our ISO 9001 Accredited facility.

certificate of conformance 

CONFORMANCE CERTIFICATE QA700

Report Date: 13/04/2022
Product Code: BPO21675
Product Description: Top Deck Bar Chair (BPO21675)
Batch Number: BPO21675 - M051807
Date of Testing: 13/09/2021
Batch Testing Result: PASS

Quality Statement
BPO21675 Top Deck Bar Chairs have been manufactured according to AS/NZS 2425:2015.

Batch Number	Strength Grade	Deflection (mm)	Recovery (mm)
M051807	60 kg	0.4 mm	0.8 mm
M051807	120 kg	0.4 mm	0.8 mm
M051807	200 kg	0.4 mm	0.8 mm
M051807	300 kg	0.4 mm	0.8 mm

Notes:
The load applied on the specimens will be affected by the spacing of the bar chairs and therefore the number of chairs used per bay.
AS 2321-2018 Residential Pavements requires a maximum bar chair spacing of 600mm for residential pavements.
The Residential Construction Code Volume 2 requires a maximum bar chair spacing of 600mm for buildings.

Name: Glen Taylor
Job Title: Product Manager
Signature: 

reid
Construction Solutions



All Danley™ plastic chairs and spacers comply with the requirements of AS/NZS 2425:2015

T: 1300 326 539 | E: sales@danley.com.au | W: www.danley.com.au

About Us...

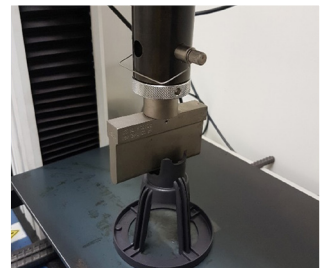
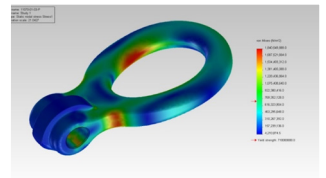
RCS is a division of Illinois Tool Works (ITW) a Fortune 500 diversified manufacturing company that brings together the combined resources of market leading brands including Reid™, Danley™ and Miska™.

Specialising in providing smart engineered concrete solutions for both wet and dry concrete construction, RCS devotes it's resources to research and development, engineering & design services, manufacturing and distribution, whilst retaining a specialist sales and specification structure.

With manufacturing hubs located in Melbourne and Brisbane, and a network of distribution centres in all the major metropolitan locations throughout Australia and New Zealand, RCS services the concrete construction industry across the Commercial, Precast, Tilt-Up, Structural Steel, Industrial and Residential Flooring market segments.



The RCS ISO 9001 accredited facility located at Chirnside Park, Victoria



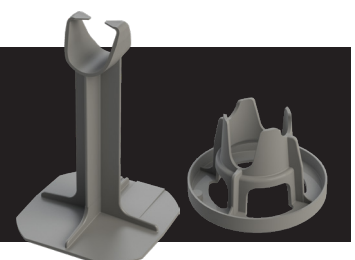
Product Research, Development, Testing & Compliance

Through our ongoing commitment to product research, development and testing, RCS has established a dedicated team and fully functioning Product Engineering Laboratory dedicated to understanding and improving concrete construction.

The establishment and continued support of this initiative demonstrates our commitment and belief in the growth of the concrete industry and serves as a dynamic platform to provide our customers first hand testing, training and familiarisation. This ultimately augments RCS's commitment to innovative solutions to progress the concrete construction Industry.



**Danley™ Plastic Chairs & Spacers
comply with the requirements of AS/NZS 2425:2015**



T: 1300 326 539 | E: sales@danley.com.au | W: www.danley.com.au