

PaveX™ Geared™

Technical Data Sheet



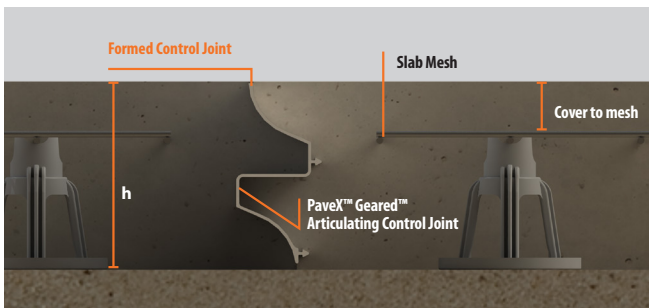
Residential Pavements

September 2022

Product Description

PaveX™ Geared™ is designed specifically for concrete footpaths and shared bikeways impacted by soil heave or tree root ingress. An innovative articulating formed control joint system, PaveX™ Geared™ allows for concrete pavement sections to rise and/or fall whilst limiting differential deflection and mitigating tripping hazards.

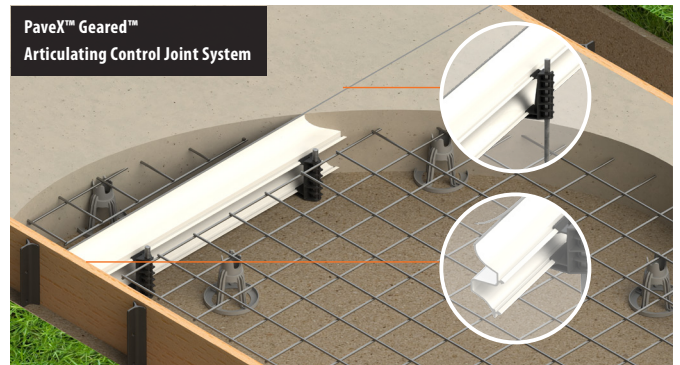
PaveX™ Geared™ is available in 100mm, 125mm and 150mm profile heights. Extruded in corrosion-free, UV stabilised uPVC to standard 3 metre lengths, PaveX™ Geared™ profiles are co-extruded with Rip-A-Strip™ Capping in either Black or Grey which provide clean, laitance-free joint lines. PaveX™ Geared™ is sold in kits which includes Galvanised Stakes and Brackets for fast and easy on-site installation. Clip-on Joiners are sold separately.



AS 3727.1:2016 - Compliance Information

- Full slab depth (h) articulating formed control joint with interlocking shear keys providing load transfer.
- Spacing of Geared™ to be no greater than prescribed in Table 5.2 of AS 3727.1:2016.
- The steel reinforcing mesh shall be placed as per the requirements of AS 3727.1:2016
- Flexible PVC Rip-A-Strip™ Capping
- No sealant required at top of formed control joint.

Applications & Environments



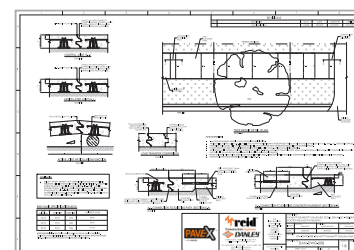
- Footpaths
- Driveways
- Bicycle Paths
- Urban Streetscapes

Geared™ Kit Product Codes

Kit Code:	Description	Packs per Kit
PXG100BKIT	PaveX™ Geared™ 100mm 5x3m Kit Black Rip-A-Strip™ Capping, Stakes & Brackets	2
PXG100GKIT	PaveX™ Geared™ 100mm 5x3m Kit Grey Rip-A-Strip™ Capping, Stakes & Brackets	2
PXG125BKIT	PaveX™ Geared™ 125mm 5x3m Kit Black Rip-A-Strip™ Capping, Stakes & Brackets	2
PXG125GKIT	PaveX™ Geared™ 125mm 5x3m Kit Grey Rip-A-Strip™ Capping, Stakes & Brackets	2
PXG150BKIT	PaveX™ Geared™ 150mm 5x3m Kit Black Rip-A-Strip™ Capping, Stakes & Brackets	2
PXG150GKIT	PaveX™ Geared™ 150mm 5x3m Kit Grey Rip-A-Strip™ Capping, Stakes & Brackets	2
PXGCJ	PaveX™ Geared™ Clip-on Joiner Pack Contains 50pcs"	1

Specifying PaveX™ Geared™ for Formed Control Joints

DANLEY™ PAVEX™ GEARED™ uPVC CORROSION-FREE, MODULAR SACRIFICIAL FORMWORK JOINTING SYSTEM WITH ARTICULATION FUNCTIONALITY. OVERLAPPING DOUBLE SHEAR KEYS PROVIDING LOAD TRANSFER. RIP-A-STRIP™ CAPPING FEATURE FOR EASY CONCRETE LATENCY REMOVAL. COMPLETE WITH ADJUSTABLE STAKE BRACKETS, DRIVE-N-TWIST STAKES AND JOINERS. TO BE INSTALLED IN ACCORDANCE WITH AS 3727.1 :2016 RESIDENTIAL PAVEMENTS. AVAILABLE IN 100 mm 125 mm AND 150 mm JOINT HEIGHTS.



Scan the QR Codes to download a copy of the PaveX™ Specification Details in either DWG or PDF format.



DWG



PDF