

Project Details

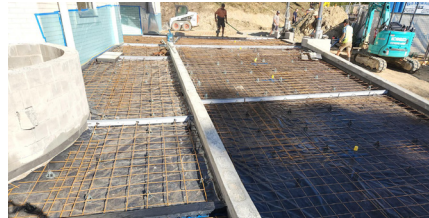
Location: Malua Bay Bowling Club
Finish Date: February 2022

Project Partners

Builder: Nick Minato
Contractor: South Building Co
Purchaser: South Coast Decorative (Batemans Bay Branch)

Product

PaveX™
Expanda™
corrosion-free
joint system



Stylish touch on concrete entranceway at newly built clubhouse

Club Malua, a bowling club in the small community of Malua Bay on the NSW South Coast, was destroyed in a fire that tore through the area on New Year's Eve 2019/2020. The greens survived the savage blaze, so play continued, with a marquee serving as a temporary clubhouse as plans for a rebuild took shape.

The new \$11 million Club Malua reopened July 2022, providing the local community with state-of-the-art facilities that have impressed club members. Nick Minato, builder and owner of project contractor South Building Co, oversaw the design and construction of the concrete ramp that serves as the entranceway to the impressive new club. "I just wanted it to look good when it was finished," Minato said, looking back on the approximately 200sqm of concrete he laid for the job. Minato used PaveX™ Expanda™ uPVC expansion joints to connect sections of the entranceway ramp.

Here's what he found:

PVC capping strip provides slick finish. A PVC capping strip, known as PaveX™ Expanda™ Rip-A-Strip™, delivered the clean, laitance-free joint line Minato demanded. "The job came up nice, really nice. The plastic strip looks great, and no one trips on it either," Minato said. But more than simply looking good, the PVC Rip-A-Strip™ joint is impervious to the corrosive forces of seaside environments, where steel expansion joint systems are prone to rust-related failure and spalling.

Formwork stays level

Keeping formwork level is a bugbear for many concreters. There are several workarounds, such as jamming a wedge under formwork or using discarded concrete to hold things in place. The PaveX™ Drive-n-Twist stake and stake bracket keeps formwork level. "I like the way PaveX™ is held to height," Minato said. "It's a good feature compared to other systems. The top of the PaveX™ divider is locked to height, so as you're pouring you always know that that's your height and that it's rigid."

Ideal project scenario

"If my business was doing footpaths all day, I wouldn't look at another product," Minato said. "PaveX™ is perfect for joints up to about two metres. You can really control where it sits, and it's stiff enough to keep edging gun-barrel straight."

Designed with concrete contractors in mind and a view to council requirements for sustainable practices and products, PaveX™ Expanda™ recyclable uPVC profiles provide a corrosion-free, UV stable system for expansion joints. Reinforced polymer dowels and sleeves support a smooth and quiet transition between pavement sections, with sacrificial formwork providing up to 10mm of thermal expansion at the joint.

PaveX™ Expanda™ is available in 100 mm and 125 mm joint heights. PaveX™ Expanda™ HD is available for heavy duty applications in 150mm slab heights.

