

Slab-on-Ground Industrial, Residential and Pavement Systems PRODUCT CATALOGUE

Load Transfer and Deflection Control
Systems for Construction and
Contraction Joints in Concrete Floor
Slabs, Footpaths and Driveways.

Reinforcing Chairs &
Spacing Solutions



Overview

ramsetreid™ specialises in the manufacture and supply of innovative products and solutions for the concrete construction industry. Our Danley™ product range was specifically developed to solve problems faced by the industry in the design and construction of concrete slabs-on-ground. The range overcomes many common challenges in the design and construction of durable, maintenance-free and safe concrete flatwork.

Joint failure and random cracking of industrial concrete floors are the two most frequent sources of complaint from asset owners.

A properly designed concrete slab that will perform well under traffic must include products that provide proper load transfer and joint protection. Our products and systems are designed for these vital functions providing durable floors with spall free joints and greatly reduced random cracking.

Danley™ also offers a complete range of pod and reinforcing mesh spacers required for fast and efficient construction of residential slabs of uniformed quality and concrete cover.





Product Description

Diamond™ Dowels are a plate dowel and sleeve system designed for construction joint applications in concrete slabs and pavements. Diamond™ Dowels are designed as a fast fix system that provides load transfer across the joint and minimises differential deflection between adjacent slab panels. **Diamond™ Dowels** provide a low in-place cost solution by eliminating the need for the drilling or processing of formwork that is required with traditional round and square dowel systems. **Diamond™ Dowels** attach directly to wooden formboard or metal formwork plates and come pre-packaged with all components ready for installation.

Danley™ **Diamond™ Dowels** comply with TR34 (4th Edition) load capacity at 20mm joint width.

Standard Finish:

Black, galvanised or stainless steel dowels with a plastic sleeve.



Simplifies form removal, can also be integrated into formwork systems including Danley™ ArmourMate™



DD YouTube Video



Diamond™ Dowel Brochure

Features

- Standard Diamond™ Dowel plates are manufactured from steel to AS/NZS 3679.1 Grade 300.
- Maximises surface area at the joint.
- Nailing flange provides secure attachment to formboards.
- Double-headed nails help retain the sleeve in the concrete when stripping the formboards.
- Sleeve provides expansion capacity of 5mm.
- Sleeve system ensures the dowel is perpendicular to the formboard and is stable.
- Sleeves moulded from durable, non-compressible plastic.
- Hot-dip galvanised steel to AS/NZS 4680.

Advantages

- Eliminates any drilling or processing of formwork.
- Allows for diagonal shrinkage movement in two directions in the horizontal plane.
- Reduces risk of restraint.
- Reduced likelihood of sleeve knock-off when placing steel reinforcement mesh.
- Maximises surface area of the joint line.

Concreter Benefits

- Speed and accuracy of dowel placement.
- Lowest placement cost.
- Ensures the flattest floors at the joint.
- Nails retain sleeve during formwork removal.
- Greater stakeholder satisfaction.

Asset Protection Benefits

- Reduces floor maintenance and downtime costs over the life-cycle of the facility.
- Reduces wear and tear on tenant's materials handling equipment.
- Provides a smoother floor surface at the joints which ensures tenant efficiency.
- Increase tenant satisfaction and return on investment.

Engineering Benefits

- Complies with TR34 (4th Edition) load capacity at 20mm joint width.
- Allows for perpendicular and parallel differential shrinkage.
- Diamond shape reduces risk of restraint.
- Limits slab deflection ACI360R-10.
- Sleeve provides expansion.
- Sleeve ensures the plate dowel is held perpendicular to the joint.



Product Code	Description	Trade Pack	Bulk Pack
DDSLPL06X110B	Diamond Dowel 6mm - Black	25	500
DDSLPL06X110G	Diamond Dowel 6mm - Galv	25	500
DDSLPL10X110B	Diamond Dowel 10mm - Black	15	500
DDSLPL10X110G	Diamond Dowel 10mm - Galv	15	500

Trade Pack

Designed for the rigours of onsite construction, the Danley™ Diamond™ Dowel Trade Pack is a sturdy, durable and easy to carry carton that is work-site tough. Diamond™ Dowels are also available in a Bulk Pack (not pictured).



Product Description

The patented PD³™ design features a tapered and sleeveless plate dowel that provides the world's best performance in limiting joint deflection to provide superior joint stability.

The PD³™ Dowel Cradle provides the highest deflection control tolerance in line with ACI Standards recommendations to limit joint spalling, facilitate load transfer and provide the lowest risk of restraint to ensure the best serviceability outcome for the slab design. The use of the PD³™ system extends the life-cycle of the floor to provide the highest level of floor efficiency for tenants and the highest return on investment for the asset owner.

PD³™ Dowel Cradles are designed to provide a total contraction joint system solution by incorporating two systems in the one solution.

The tapered PD³™ dowels that allow for lateral movement eliminating the need for a plastic dowel sleeve and the wire cage that acts as a chair and spacer to ensure the dowels are aligned and maintained at the correct height and spacing during the pouring of the slab.

The elimination of the plastic sleeve from the dowel ensures direct concrete to steel contact which provides the best possible control of load deflection by eliminating the crush factor of the plastic and providing a tighter control tolerance than other sleeved plate dowel systems.



PD³™ Dowel Cradle's superior engineered performance controls floor flatness limiting joint spalling.

Features

- The PD³™ Dowel Cradle features a plate dowel with bond breaker allowing concrete to steel contact.
- The PD³™ Dowel Cradle utilises a tapered plate dowel that allows lateral movement without the use of a plastic sleeve.
- The wire cradle construction ensures the accurate placement and alignment of the plate dowels at the correct centres and height within the slab.
- Hot-dip galvanised steel to AS/NZS 4680.

Advantages

- No plastic sleeves required.
- Direct steel contact allows superior load deflection control.
- Engineered to meet Super Flat Floor (SFF) requirements, ACI360R-10.
- The use of the PD³™ Dowel Cradle creates a lateral and longitudinal movement void.
- Reduces the risk of restraint.
- Provides fast and accurate horizontal and vertical placement.

Concrete Benefits

- Speed and accuracy of dowel placement.
- Lowest placement cost.
- Ensures the flattest floors at the joint.
- Pour through capability.
- Greater stakeholder satisfaction.

Engineering Benefits

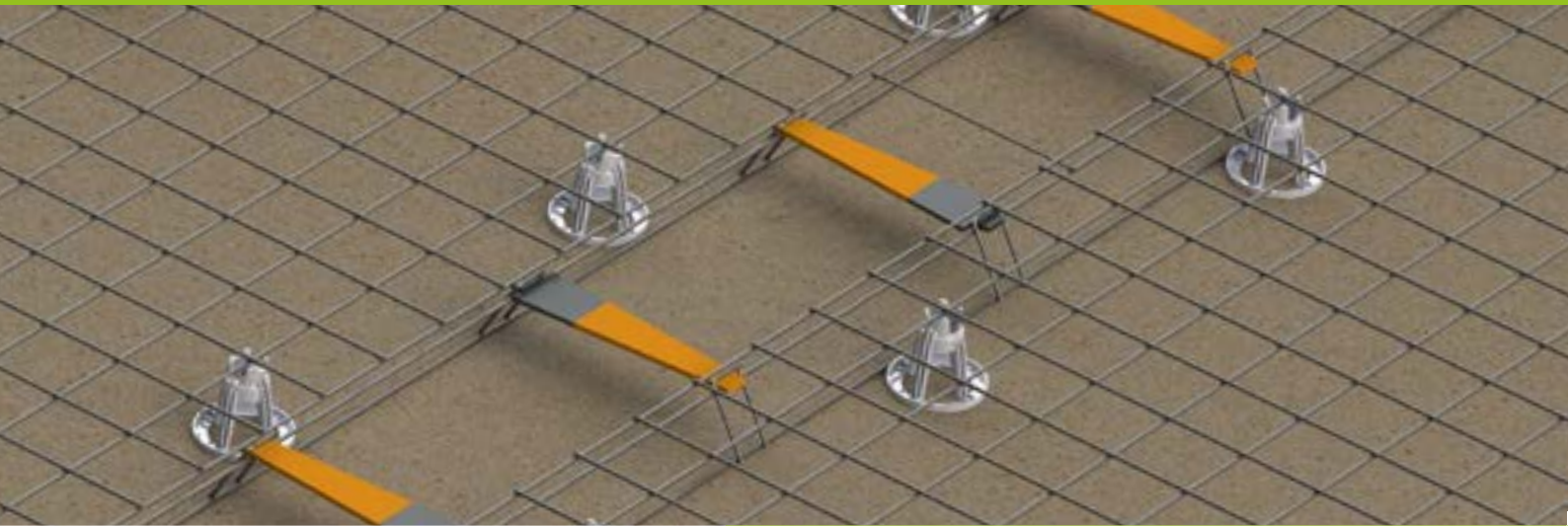
- Provides highest performance in controlling joint deflection.
- Compliance with ACI360R-10, design recommendations.
- Delivers flatter joints, FF and FL, ACI 117.
- Accuracy of dowel placement ensures the most effective load transfer performance.

Asset Protection Benefits

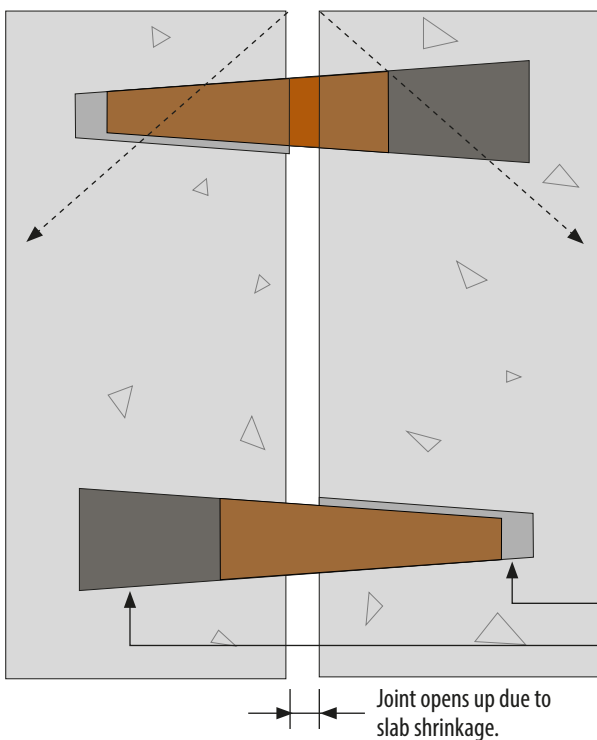
- Reduces the risk of spalling damage to the concrete at the joints.
- Reduces floor maintenance and downtime costs over the life-cycle of the facility.
- Reduces wear and tear on tenant's materials handling equipment.
- Provides a smoother floor surface at the joints which ensures tenant efficiency.
- Increases tenant satisfaction and return on investment.

Product Options

- Square and Round Dowel Cradles are available on request.

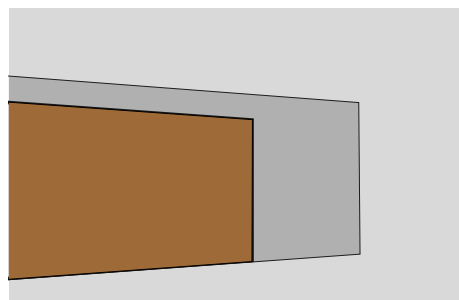


Lateral Movement Of Dowels (Plan View) - How PD^{3™} Dowels provide lateral and longitudinal shrinkage



ACI360R-10 States (Chapter 6.2 - Load Transfer Mechanisms)

"Joint and crack stability measurements below 0.25 mm for joints or cracks subjected to lift truck traffic with small hard wheels will have good service life"



Panels shrink diagonally from corners. If the left side panel shrinks more than the right side panel differential shrinkage needs to be accommodated.

As the panels shrink, a small void is formed in the concrete by the tapered dowel, allowing for differential parallel shrinkage.



Danley™ PD3™ Video



PD3™ Brochure

Product Code	Description	Pack Quantity
PD306450125BLK	PD3 Cradle 6mm @ 450 centres to suit 120-135mm Slab - Black Dowels	25
PD306450125G	PD3 Cradle 6mm @ 450 centres to suit 120-135mm Slab - Galv Dowels	25
PD306450150B	PD3 Cradle 6mm @ 450 centres to suit 140-160mm Slab - Black Dowels	25
PD306450150G	PD3 Cradle 6mm @ 450 centres to suit 140-160mm Slab - Galv Dowels	25
PD306450175B	PD3 Cradle 6mm @ 450 centres to suit 165-185mm Slab - Black Dowels	25
PD306450175G	PD3 Cradle 6mm @ 450 centres to suit 165-185mm Slab - Galv Dowels	25
PD310450150B	PD3 Cradle 10mm @ 450 centres to suit 140-160mm Slab - Black Dowels	25
PD310450150G	PD3 Cradle 10mm @ 450 centres to suit 140-160mm Slab - Galv Dowels	25
PD310450175B	PD3 Cradle 10mm @ 450 centres to suit 165-185mm Slab - Black Dowels	25
PD310450175G	PD3 Cradle 10mm @ 450 centres to suit 165-185mm Slab - Galv Dowels	25
PD310450200B	PD3 Cradle 10mm @ 450 centres to suit 190-210mm Slab - Black Dowels	25
PD310450200G	PD3 Cradle 10mm @ 450 centres to suit 190-210mm Slab - Galv Dowels	25



Scan the QR code above to see our PD3™ video on YouTube®

Ground Crack Inducers

CRINDUC25X3	25mm H x 3000mm
CRINDUC50X3	50mm H x 3000mm





Round and Square Dowel Cradles

Dowel Cradles are designed to provide a total joint system solution by incorporating two systems in one. The dowels and sleeves provide load transfer, whilst the wire cage (or cradle) acts as a bar chair and spacer. The wire cage ensures that the dowels are maintained at the correct height and spacing during the pouring of the slab. Round and Square Dowel Cradles are available on a made-to-order basis to customer specifications.

Round Dowels

- Available in 16, 20, 24, 27, 33, 36 and 39mm standard dowel sizes.
- Available in standard lengths – black or galvanised.
- Custom lengths available upon request.
- Dowels made from AS/NZS 3679.1, Grade 300 steel.
- Hot-dip galvanised steel to AS/NZS 4680.
- Friction cut dowels, not cropped.

Shrink Wrapped Round Dowels

Shrink-wrapped structural grade round dowels friction cut to length, not cropped, with a plastic shrink-wrap coating for over half the length of the dowel.

The shrink-wrap bags provide bond breaking between the dowel and concrete without the need for greasing dowels. They are available in a variety of standard sizes upon request.

Product Code	Description	Pack Quantity
DWLRN16X400B	Dowel Round 16mm x 400mm - Black	1
DWLRN16X400G	Dowel Round 16mm x 400mm - Galv	1
DWLRN16X500B	Dowel Round 16mm x 500mm - Black	1
DWLRN16X500G	Dowel Round 16mm x 500mm - Galv	1
DWLRN16X600B	Dowel Round 16mm x 600mm - Black	1
DWLRN16X600G	Dowel Round 16mm x 600mm - Galv	1
DWLRN20X400B	Dowel Round 20mm x 400mm - Black	1
DWLRN20X400G	Dowel Round 20mm x 400mm - Galv	1
DWLRN20X500G	Dowel Round 20mm x 500mm - Galv	1
DWLRN20X600B	Dowel Round 20mm x 600mm - Black	1
DWLRN20X600G	Dowel Round 20mm x 600mm - Galv	1
DWLRN24X450B	Dowel Round 24mm x 450mm - Black	1
DWLRN24X450G	Dowel Round 24mm x 450mm - Galv	1
DWLRN33X450B	Dowel Round 33mm x 450mm - Black	1
DWLRN33X450G	Dowel Round 33mm x 450mm - Galv	1



Load Transfer Systems



Square Dowels



- Available in 16, 20, 25, 32, 40 and 50mm standard dowel sizes.
- Available in 400mm and 500mm standard lengths.
- Custom lengths available upon request.
- Dowels made from AS/NZS 3679.1, Grade 300 steel.
- Friction cut dowels, not cropped.
- Hot-dip galvanised steel to AS/NZS 4680.



Load Transfer Systems

Dowelmaster™



- Dowelmaster™ sleeves are multi-directional plastic sleeves suitable for high capacity square dowels.
- They allow for contraction at the joint, as well as having a small amount of lateral movement and expansion capacity.
- They are ideal for construction joints in ground slabs and are available in 16mm, 20mm and 25mm standard sizes.
- The 16mm and 20mm Dowelmaster™ sleeves are fastened to wooden form boards (using the optional nailing plate) or attach directly to Danley™ Keyjoint.
- The 25mm Dowelmaster™ sleeves have a built in nailing flange and can attach directly to form boards.
- The sleeves are supported at the rear by a stake and wedge system eliminating the need for bar chairs.



Dowelmaster™

Product Code	Description	Pack Quantity
DWLSQ16X400B	Dowel Square 16mm x 400mm - Black	1
DWLSQ16X400G	Dowel Square 16mm x 400mm - Galv	1
DWLSQ20X400B	Dowel Square 20mm x 400mm - Black	1
DWLSQ20X400G	Dowel Square 20mm x 400mm - Galv	1
DWLSQ20X500B	Dowel Square 20mm x 500mm - Black	1
DWLSQ20X500G	Dowel Square 20mm x 500mm - Galv	1
DWLSQ20X600G	Dowel Square 20mm x 600mm - Galv	1
DWLSQ25X400G	Dowel Square 25mm x 400mm - Galv	1
DWLSQ32X500B	Dowel Square 32mm x 500mm - Black	1
DWLSQ32X500G	Dowel Square 32mm x 500mm - Galv	1

Product Code	Description	Pack Quantity
DWLSQMAS16X210	Dowelmaster Square - 16mm x 150-200mm with Stake – White	100
DWLSQMAS20X260	Dowelmaster Square- 20mm x 200-250mm with Stake – Yellow	100
DWLSQMAS25X250	Dowelmaster Square - 25mm x 200-250mm with Stake & nailing plate - Purple	25
DWLSQMAS25EXT	Dowelmaster Square - 25mm x 100mm Extension – Purple	100
DWLSQMASNL16	Dowelmaster Square - Nailing Plate 16mm – White	100
DWLSQMASNL20	Dowelmaster Square - Nailing Plate 20mm - Yellow	100



Speed Sleeve™

- Speed Sleeves™ are used with round dowels to eliminate the need for drilling formwork and greasing dowels.
- Approved by engineers, Speed Sleeve™ minimises vertical movement at joints, reduces damage and is quick and easy to use. Suitable for Black, Galvanised or Stainless Steel Dowels.
- Nailing Plates are sold separately.



Expansion Cap

The non-corrosive Expansion Cap fits firmly over the end of a Round Dowel providing a minimum of 10mm of expansion capacity with an internal pin which locates the dowel and creates the void for the expansion.

Expansion Caps are available in sizes to suit 16, 20, 24, 27, 33 and 36mm round dowel sizes. They can be used on loose dowels or can be used in conjunction with Danley™ Round Dowel Cradles.

Multi-Fit Expansion Cap: The Multi-Fit Expansion Cap (24 – 36mm) will need to be taped to the dowel to prevent concrete ingress.



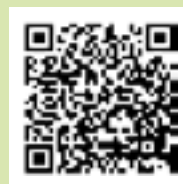
Dowelsert™

Dowelsert™ is designed to be used with round dowels to eliminate the need for drilling formwork and greasing dowels. Dowelsert™ minimises vertical movement which reduces spalling at the joint, and are quick and easy to use.

Dowelsert™ is suitable for black, galvanised or stainless steel friction cut dowels. They are ideal for construction joints in ground slabs and are available in 16mm and 20mm standard sizes. The Dowelsert™ nails to wooden or metal forms with a flanged nailing plate built into the sleeve.

Product Code	Description	Pack Quantity
DWLSPDSL16X240	Dowel Speed Sleeve 16mm x 240mm	100
DWLSPDSL16X310	Dowel Speed Sleeve 16mm x 310mm	100
DWLSPDSL20X240	Dowel Speed Sleeve 20mm x 240mm	100
DWLSPDSL20X310	Dowel Speed Sleeve 20mm x 310mm	100
DWLSPDSL24X240	Dowel Speed Sleeve 24mm x 240mm	100
DWLSPDSL24X310	Dowel Speed Sleeve 24mm x 310mm	100
DWLSPDSL33X240	Dowel Speed Sleeve 33mm x 240mm	50
DWLSPDSL33X310	Dowel Speed Sleeve 33mm x 310mm	50
DWLSPDSL16NAIL16	Dowel Speed Sleeve Nailing Plate 16mm - Green	100
DWLSPDSL16NAIL20	Dowel Speed Sleeve Nailing Plate 20mm - Red	100
DWLSPDSL16NAIL24	Dowel Speed Sleeve Nailing Plate 24mm - Brown	100
DWLSPDSL16NAIL33	Dowel Speed Sleeve Nailing Plate 33mm - Blue	50

Product Code	Description	Pack Quantity
DSR16	Dowelsert 16mm (Round)	25
DSR20	Dowelsert 20mm (Round)	25
BEXCAP12	Expansion Cap for Round Dowels 12mm	100
BEXCAP1620	Expansion Cap for Round Dowels Multi-Fit 16-20mm	100
BEXCAP24	Expansion Cap for Round Dowels 24mm	100
DWLEXPCAPMULTI	Expansion Cap for Round Dowels Multi-Fit 24-36mm	100



Speed Sleeve™



Danley™ Expansion Cap



Danley™ Dowelsert™



Product Description

Flanged Dowel Boxes are multi-directional metal sleeves supplied with high capacity square dowels. They are designed for attachment to metal or wooden formwork by use of the integral nailing flange and location marks.

Flanged Dowel Boxes make allowance for initial shrinkage and then provide capacity for the ongoing thermal expansion and contraction of the joint as well as catering for excess lateral movement between adjacent and intersecting slab panels. Flanged Dowel Boxes are designed for construction joints in both ground and elevated slabs and are available in a number of standard sizes. Custom sizes can be manufactured on request.

Features

- Integral nailing flange for fast fit attachment to formwork.
- Chalk line marks are integrated in the flange to mark centre-line position.
- Large lateral movement capacity (minimum of 20mm either side of the dowel).
- Large expansion joint capacity (20mm standard).
- Supplied in kit form with a friction cut square dowels to AS/NZS3679.1, Grade 300.
- GALVABOND® box with black or hot-dip galvanised dowels to AS/NZS 4680.

Advantages

- Designed for Post Tension joint applications with large shrinkage.
- Allows for movement in two directions in the horizontal plane.
- Reduces risk of restraint.
- Simple nail or screw on installation.
- Eliminates the need to drill or process formwork.
- Reduced likelihood of sleeve knock-off when placing steel reinforcement mesh.

Simplifies form removal, can also be integrated into formwork systems including Danley™ ArmourMate™

Asset Protection Benefits

- Maintains alignment of slab panels to reduce joint damage.
- Reduces floor maintenance and downtime costs over the life-cycle of the facility.
- Reduces wear and tear on tenant's materials handling equipment.
- Provides a smoother floor surface at the joints which ensures tenant efficiency.
- Increase tenant satisfaction and return on investment.

Concreter Benefits

- Eliminates drilling or processing of formwork.
- Integral nailing flange for fast fit attachment to formwork.
- Chalk line marks are integrated in the flange to mark centre-line position.
- Reduces sleeve knock off during mesh placement.
- Lateral movement allowances reduce risk of restraint and cracking.

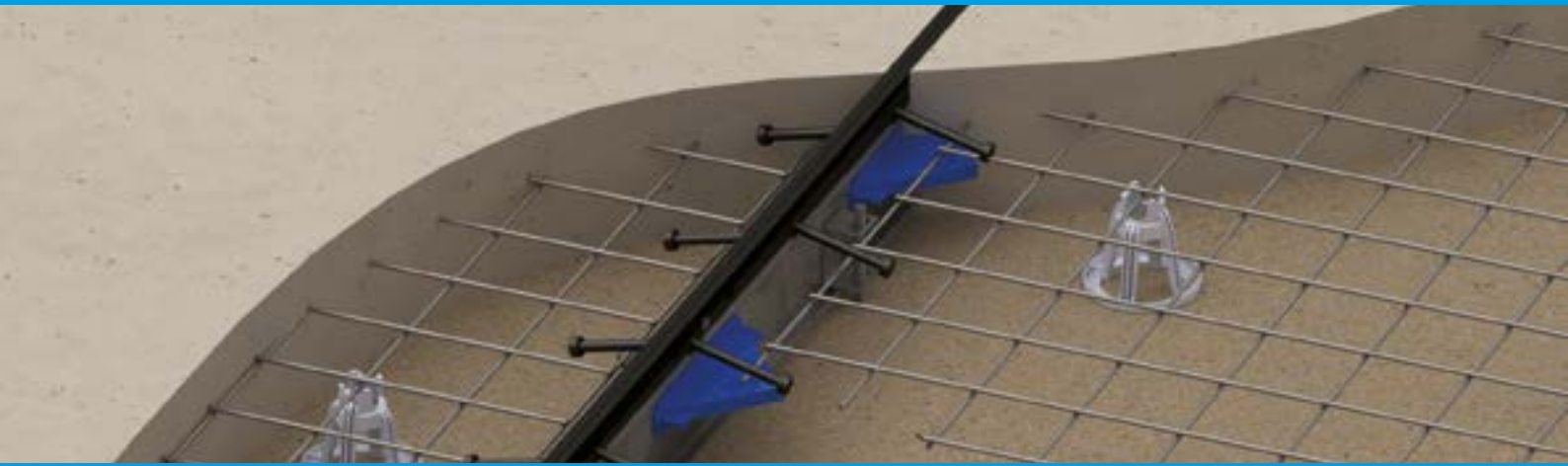
Product Code	Description	Pack Quantity
DWLFLKIT16X220G	Dowel Flanged Box Kit 220mm box with 16 x 400mm Galv Dowel - 20mm Foam	1
DWLFLKIT20X220G	Dowel Flanged Box Kit 220mm box with 20 x 400mm Galv Dowel - 20mm Foam	1
DWLFLKIT20X270G	Dowel Flanged Box Kit 270mm box with 20 x 500mm Galv Dowel - 20mm Foam	1
DWLFLKIT25X220G	Dowel Flanged Box Kit 220mm box with 25 x 400mm Galv Dowel - 20mm Foam	1
DWLFLKIT32X270G	Dowel Flanged Box Kit 270mm box with 32 x 500mm Galv Dowel - 30mm Foam	1
DWLFLKIT40X220G	Dowel Flanged Box Kit 220mm box with 40 x 400mm Galv Dowel - 35mm Foam	1
DWLFLKIT40X270G	Dowel Flanged Box Kit 270mm box with 40 x 500mm Galv Dowel - 35mm Foam	1

Engineering Benefits

- Allows for large lateral movement.
- Allows for bilateral and diagonal shrinkage at intersections.
- Suits slab on ground and suspended slabs.
- Enables high load carrying capacity.
- Boxes fully enclosed to prevent concrete slurry ingress.
- Grade 300 dowels.

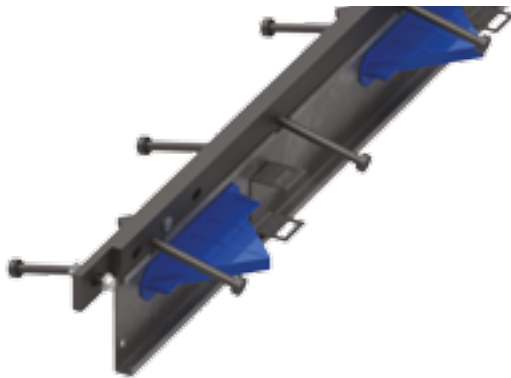


Flanged Dowel Box Brochure



Product Description:

Hyper ArmourMate™



Hyper ArmourMate™ is a premium armour edging solution and is designed for applications where the concrete edge and wear surface must withstand materials handling traffic with small hard wheels carrying high-loads on a daily basis, in particular, semi-automated and automated materials handling environments. The Hyper ArmourMate™ system is manufactured from high quality Cold Drawn Steel rails to provide superior impact protection and is recommended for use when the floor requires the highest level of protection performance over the longest possible life-cycle.

Plate 60 ArmourMate™



Plate 60 ArmourMate™ is designed to be installed at the construction joints in Post Tension (PT) slab applications or where large shrinkage joints are expected to occur. The plate which bridges the gap provides a smooth transition for traffic travelling over the joint, minimising wheel damage and impact. Plate 60 ArmourMate™ allows for up to 60mm expansion in the joints and is designed for applications where the wear surface must withstand materials handling traffic with small hard wheels carrying high-loads on a daily basis, in particular semi-automated and automated materials handling environments.

Insert Plate ArmourMate™



Insert Plate ArmourMate™ is a construction joint solution offering all the same benefits as Plate 60 but with a replaceable, centrally positioned cover plate. It is perfectly suited to applications where the wear surface must withstand materials handling traffic with small hard-wheels carrying high-loads on a daily basis, in particular semi-automated and automated materials handling environments, and high volume doorways/aisles. By centralising the cover plate over the gap, it provides a minimal transition bump thus reducing wheel damage, improving driver comfort and load safety.



Features:

Hyper ArmourMate™ systems are designed in two configurations: the Top Rail System and the Full Joint System. Hyper ArmourMate™ Full Joint system provides the total joint solution by incorporating the cast in steel top rail edge protection system, the Diamond™ Dowel which provides both control over differential deflection and load transfer across the joint, with the galvanised sacrificial formwork plate which takes the place of the traditional form board. Hyper ArmourMate™ is available in a number of slab height configurations with the primary 'A' Grade systems typically available off the shelf for immediate delivery. Custom or non-standard configurations are also available on a made-to-order basis.

Advantages:

Range Options

- Top Rail or Full Joint System configurations.
- Black or hot-dip galvanized steel to AS/NZS 4680 or stainless steel options available by request.
- 6mm or 10mm Diamond™ Dowel.
- Infill lengths available on request.
- Intersections available on request.
- Standard systems or custom configurations also available.



Hyper ArmourMate™
Brochure

Plate 60 ArmourMate™ system is designed to provide the total joint management system for large construction gaps by incorporating 4 systems in the one solution: (1) Joint Edge Protection (2) Cover plate for joint gaps/openings up to 60mm (3) Load transfer system and (4) Sacrificial galvanised formwork that replaces traditional timber form board. Plate 60 ArmourMate™ is available on a made-to-order basis with a variety of Load Transfer System options including the Danley™ Flange Dowel Box with high lateral & horizontal movement capacity for PT Systems.

Range Options

- Full Joint System configurations.
- Black or hot-dip galvanized steel to AS/NZS 4680.
- Multiple dowel options.
- Infill lengths available on request.
- Intersections available on request.
- Made to order, or Custom configurations available.
- Post Tension (PT) configuration available.



Plate 60 ArmourMate™
Brochure

Insert Plate ArmourMate™ features a drop in steel cover plate that can be re-sized and retrofitted over time to bridge large or changing joint gaps. Designed with 15mm lateral and horizontal movement capability, the cover plate remains central over the joint gap. The system can be supplied with an optional temporary timber cover plate for initial construction that can then be replaced with a steel cover plate once the slabs have contracted and the joint openings can be accurately measured. Insert Plate ArmourMate™ is available on a made-to-order basis with a variety of Load Transfer System options including the Danley™ Flange Dowel Box with high lateral & horizontal movement capacity for PT Systems.

Range Options

- Full Joint System configurations.
- Black or hot-dip galvanized steel to AS/NZS 4680.
- Multiple dowel options.
- Infill lengths available on request.
- Made to order, or custom configurations available.
- Removable cover plate.



Insert Plate ArmourMate™
Brochure



Product Description

K-FORM™ is a “corrosion free” sacrificial plastic formwork system that makes it simple to pour more concrete per day. Easy to use with no need for specialised tools, K-FORM™ features ‘click together’ components which provide simplicity, saving you time and money on site. Just set out your formwork and pour concrete bay after bay. The K-FORM™ removable top strip makes it easy to seal concrete sections. K-FORM™ can be easily configured to pour slabs of 100mm, 125mm, 150mm and up to 175mm in thickness.

Why choose K-FORM™?

The pouring of floor and pavement slabs has never been so easy! K-FORM™ can be set up four times quicker than traditional steel and timber formwork systems. The ability to pour both sides of the rail at the same time increases the speed with which concrete pavement slabs can be completed, saving contractors’ valuable time and money. With a built in expansion joint, click together design and removable top strip, K-FORM’s™ patented design gives the best possible performance with quality results.

Features & Benefits

- Reduces labour and set up times.
- Built-in expansion capability – up to 10mm.
- High performance fibre reinforced dowels.
- Complies with AS 3727 Residential Pavements.
- Pre-drilled holes for dowel sleeves (300mm centres).
- Removable top capping.
- Quality results and finishing.
- Durable UPVC.
- Lightweight: 80% lighter than steel formwork.
- Can be installed by one person (reduces labour costs).
- Non-corroding; no metal parts.
- Fuel and oil resistant.
- Easy to seal concrete sections.
- Non-conductive.
- Made from recycled materials.

Applications

- Footpaths and pavements.
- Bikeways.
- Driveways.
- Tennis Courts.
- Warehouses.
- Service Stations.
- Distribution centres.

Product Code	Description	Pack Quantity
KFORM100X1500	K Form 100mm x 1500mm (with capping & joiners)	1
KFORM100X3000	K Form 100mm x 3000mm (with capping & joiners)	1
KFORM125X1500	K Form 125mm x 1500mm (with capping & joiners)	1
KFORM125X3000	K Form 125mm x 3000mm (with capping & joiners)	1
KFORM150X3000	K Form 150mm x 3000mm (with capping & joiners)	1
KFORM175X3000	K Form 175mm x 3000mm (with capping & joiners)	1
KFORMDAKIT	K Form Dowel Kit - Inc Sleeve & Glass Fibre Dowel (Pack of 50)	1



K-FORM™ is compatible for use either with, or without non-corrosive dowels. Danley™ K-FORM™ Dowel Kits are sold separately.



K-FORM™ Brochure



Product Description

As an alternative to saw cutting, place Crack-A-Joint™ into the wet concrete along the joint line, to induce a controlled crack for the full depth of the concrete.

Crack-A-Joint™ is available in standard 3m lengths formed from GALVABOND® steel to a height of 25mm. It can be supplied as a plain joint or with a permanent Rip-A-Strip™ capping in three different colour options: grey, sandstone and black.



Initiates a contraction joint in a slab.

Features & Benefits

- Immediately initiates a contraction joint in the slab, when positioned in wet concrete.
- Finish the slab on the same day; no need to return the next day to saw cut.
- Crack-A-Joint™ will butt up to any given edge, even columns.
- Crack-A-Joint™ can be placed precisely.
- During installation, Crack-A-Joint™ remains rigid.
- Clean and quick: Crack-A-Joint™ gives the building industry a positive alternative to existing methods.
- Available in 3 colours: grey, sandstone and black.
- Crack-A-Joint™ can be setup on stakes to provide a pour through joint.
- No fill required: the steel edge on Crack-A-Joint™ acts as a support for the edge of the concrete and stops unsightly fraying and chipping.
- Crack-A-Joint™ is roll formed from GALVABOND® steel.
- Supplied in standard 3m lengths.
- Complies with AS3727 Residential Pavements.

Product Code	Description	Pack Quantity
CJP25MM3M	Crack-A-Joint Plain 25mm x 3mtr	25
CJR25MM3MBLA	Crack-A-Joint with Rip-A-Strip 25mm x 3mtr - Black	10
CJR25MM3MGRE	Crack-A-Joint with Rip-A-Strip 25mm x 3mtr - Grey	10
CJR25MM3MSAN	Crack-A-Joint with Rip-A-Strip 25mm x 3mtr - Sandstone	10
CJSTAKE25X250	CJ Stakes 25mm x 250mm	50



Crack-A-Joint™ initiates a contraction joint in a slab.



Crack-A-Joint™ Brochure



Keyjoint profiles shown with optional capping

Product Description

The **Keyjoint** System facilitates greater control of joints in concrete slabs enabling loads to be transferred between adjoining slabs while allowing lateral movement and limiting differential vertical deflection. **Keyjoint Expanda™** provides for thermal expansion of adjacent slabs. Expanda™ comprises Danley™ Keyjoint fitted with a 5mm close cell foam.

Facilitates greater control of joints in concrete.

Features & Benefits

- Allows lateral movement between the slabs, but limits vertical differential deflection between the slabs.
- Tighter key taper, giving less differential vertical deflection than competing systems.
- Allows continuous concrete placement with preformed internal joints.
- Incorporates unique “drive-n-twist” stake system to make installation simple.
- Knock-outs provide for placement of square dowels (round dowels can also be used if specified).
- Ideal for footpaths, shared bikeways and light traffic areas.
- Companion capping available for 3mm recess, 10mm recess, or permanent capping with Rip-A-Strip™ in 4 different colours.
- Danley™ Keyjoint profiles are compatible with 16mm and 20mm Dowelmaster™.
- KeyJoint Expanda™ supplied with 5mm close cell foam.
- GALVABOND® steel “stay-in-place” formwork system.
- Complies with AS 3727 Residential Pavements.

Keyjoint provides the following benefits to concreters:

- Minimal differential deflection.
- Minimise concrete failure at joints.
- Reduced damage to equipment.
- Less frequent repairs.
- Value for money.



Keyjoint profiles are compatible use with 16mm and 20mm Dowelmaster™ sleeves



Danley™ Keyjoint Expanda™ Brochure

Keyjoint

Product Code	Description	Pack Quantity
KJ100X3M4STK	Keyjoint 100mm x 3m with 4 x 350mm Stakes	10/50
KJ100X6M8STK	Keyjoint 100mm x 6m with 8 x 350mm Stakes	10/50
KJ125X3M4STK	Keyjoint 125mm x 3m with 4 x 350mm Stakes	10/50
KJ125X6M8STK	Keyjoint 125mm x 6m with 8 x 350mm Stakes	10/50
KJ150X3M4STK	Keyjoint 150mm x 3m with 4 x 350mm Stakes	10/50
KJ150X6M8STK	Keyjoint 150mm x 6m with 8 x 350mm Stakes	10/50
KJ200X3M4STK	Keyjoint 200mm x 3m with 4 x 450mm Stakes	10/50
KJ200X6M8STK	Keyjoint 200mm x 6m with 8 x 450mm Stakes	10/50
KJ250X3M4STK	Keyjoint 250mm x 3m with 4 x 450mm Stakes	10/50

Keyjoint Expanda™

Product Code	Description	Pack Quantity
KJEXP100X3.0M05	Keyjoint Expanda 100mm x 3mtr with 4 Stakes - Foam 5mm	10
KJEXP100X6.0M05	Keyjoint Expanda 100mm x 6mtr with 8 Stakes - Foam 5mm	10
KJEXP125X3.0M05	Keyjoint Expanda 125mm x 3mtr with 4 Stakes - Foam 5mm	10
KJEXP125X6.0M05	Keyjoint Expanda 125mm x 6mtr with 8 Stakes - Foam 5mm	10
KJEXP150X3.0M05	Keyjoint Expanda 150mm x 3mtr with 4 Stakes - Foam 5mm	10
KJEXP150X6.0M05	Keyjoint Expanda 150mm x 6mtr with 8 Stakes - Foam 5mm	10
KJEXP200X3.0M05	Keyjoint Expanda 200mm x 3mtr with 4 Stakes - Foam 5mm	5
KJEXP200X6.0M05	Keyjoint Expanda 200mm x 6mtr with 8 Stakes - Foam 5mm	5
KJEXP250X3.0M05	Keyjoint Expanda 250mm x 3mtr with 4 Stakes - Foam 5mm	5



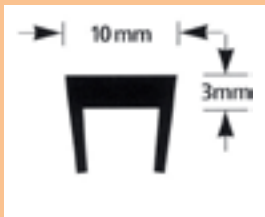
Product Description

Keyjoint Capping profiles are available in 2 styles: Removable Capping and Rip-A-Strip™ Permanent Capping. Removable Keyjoint Capping profiles are available in 10mm wide profile providing a 3mm recess, and a 12mm wide profile, which provides a 10mm recess. Once removed, the capping provides a recess for cold-applied sealants.

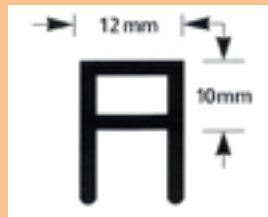
Rip-A-Strip™ permanent capping is available in 4 colours; grey, terracotta, sandstone and black. Rip-A-Strip™ gives you an efficient crack control with an attractive architectural finish. The top layer of Rip-A-Strip™ is removed prior to finishing, leaving a colour coordinated joint filler finish.

Rip-A-Strip™ is available in grey, terracotta, sandstone and black.

Keyjoint Removable Capping Profiles



10mm Standard – Removable



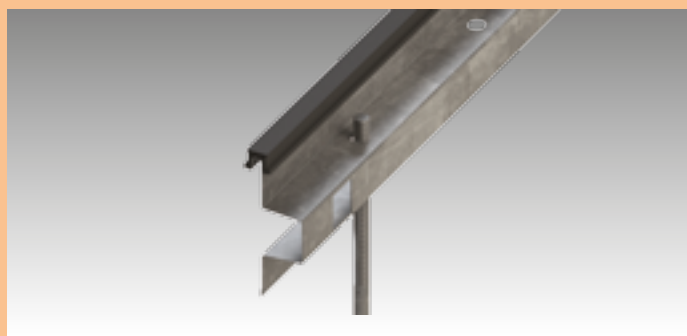
12mm Block – Removable

Rip-A-Strip™ Permanent Capping



13mm Permanent – in 4 colours

Rip-A-Strip™ Permanent and Temporary Capping profiles are suitable for use with: **Keyjoint**



Keyjoint Expanda™



Product Code	Description	Pack Quantity
KJCSTD10X025BLA	Keyjoint Capping - 10mm Standard Removable (25mtr roll)	1
KJCBK12X025BLA	Keyjoint Capping - 12mm Block Removable (25mtr roll)	1
KJCRIP13X025BLA	Keyjoint Capping - 13mm Rip A Strip (25mtr roll) - Black	1
KJCRIP13X025GRE	Keyjoint Capping - 13mm Rip A Strip (25mtr roll) - Grey	1
KJCRIP13X025SAN	Keyjoint Capping - 13mm Rip A Strip (25mtr roll) - Sandstone	1
KJCRIP13X025TER	Keyjoint Capping - 13mm Rip A Strip (25mtr roll) - Terracotta	1



Danley Keyjoint



Danley™ Keyjoint Expanda™ Brochure



Product Description:

PodRail™



The Danley™ PodRail™ is a fast fit reinforcement spacer designed to correctly space and support the reinforcement mesh in Residential Foam Pod slab construction applications. The unique spike design ensures the Podrail™ is held firmly in the Pod while placing mesh. The flatness of the base of the Podrail™ resists punching into the Pod under load ensuring that the correct concrete cover is consistently achieved.

Product Code	Description	AS/NZS 2425:2015 Load Rating (kgs)	QTY Bag/Pallet
BPODR40S	PodRail™ 40mm with Spikes	60	20

PodStar™ Spacer



The Danley™ PodStar™ Spacer is a multi-use highly adaptable spacer designed to work either as a stand alone spacer, to centrally locate reinforcing bar and to assist in economical support of trench mesh.

Product Code	Description	AS/NZS 2425:2015 Load Rating (kgs)	QTY Bag/Pallet
BPODS	PodStar™ Spacer	60	10/720
BPODEX10S	Spacer Extension	60	100/5000

Trench Mesh Supports



The Danley™ Trench Mesh Support provides uniform steel placement in strip footings, foundations and pod/raft slabs accommodating 8, 11, 12 and 16mm mesh/bar.

Product Code	Description	AS/NZS 2425:2015 Load Rating (kgs)	QTY Bag/Pallet
BCTMS	Trench Mesh Support	60	25/3000
BCTMS016	Trench Mesh Support For N16 Bar	60	25/3000
BCTMSEB270	Trench Mesh Support Edge Beam Spacer - 270mm	60	25/3000
BCTMSEB300	Trench Mesh Support Edge Beam Spacer - 300mm	60	25/3000



Features:

Anchoring Spikes:

Built in anchoring spikes allow the rail to anchor into the foam pods preventing movement when placing mesh.

Flat Design:

The "I-Beam" profile shape of the PodRail™ ensures flatness along both the top and bottom of the rail and resists bowing. The PodRail™ sits flat and provides uniform cover.

Large Aperture Design:

The design of the PodRail™ facilitates continuous, uninterrupted and consistent concrete coverage. The large flat 22mm apertures help prevent air pockets in the concrete floor slab.

Locating Ribs:

The top of the Danley™ PodStar™ Spacer has two location ribs which act as guides to centre the reinforcing bars in the middle of the 110mm beam in either direction. This makes placing steel reinforcing quick and easy.

Asymmetrical Design:

The asymmetrical shape of the PodStar™ Spacer allows for the product to be used in two directions when being used to create edge beams. One direction will space the pod 165mm from the formwork while the other at 195mm. These dimensions can be extended by using the PodStar™ Extension on either end of the PodStar™.

PodStar™ Extension (Optional):

The PodStar™ Spacer Extension is an optional attachment that allows the PodStar™ to form 270 or 300mm wide edge beams by adding 105mm to the existing PodStar™. It easily clips onto the PodStar™. Nodules on the upper surface are designed to locate mesh or loose bars.

Clip-On:

The Trench Mesh Support allows for an easy clip-on function when attaching it to reinforcing. This facilitates a quicker installation time and improves the ease of use. This clip-on feature also allows the trench reinforcing to be setup as an assembled cage out of the slab for easy drop in installation. Four types of Trench Mesh Support are available each with different clip-on features for different types of reinforcing bars.

Advantages:

- Offset wings on base for excellent stability.
- Wide flat top for ease of installation.
- Flat face profile eliminates air voids.
- Speed of use. Faster layout.
- Less physical stress on installers.
- Strong spike for tightly held positioning.
- Smooth flat top ease of mesh placement.
- Broad feet eliminates chair punch through.
- Higher integrity slab.



Danley™ PodRail™

- Easy and simple to use.
- Minimises moisture penetration by reducing the potential for damaged to poly film.
- Adaptable for multiple uses.



Danley™ PodStar™

- Consistent placement of mesh and bar optimises slab design.
- Minimises moisture penetration by reducing the potential for damaged to poly film.
- Multiple choice placement creating higher integrity floor slabs.
- Quality trenches: Promotes greater accuracy of reinforcing placement creating higher integrity floor slabs.



Danley™ Trench Mesh Supports



Combination Bar Chairs:

Are used to set the reinforcing bar and mesh to the correct position within the concrete cover. Ideal for use in applications including polystyrene pod slabs, slab-on-ground and swimming pools. The Danley™ range of Plastic Combination Bar Chairs are available in a range of standard sizes including 25mm & 40mm, 50mm & 65mm, 75mm & 90mm and 80mm & 100mm cover. Also available in sizes to suit deeper slabs requiring up to 165mm/170mm of cover.

SOG® Plastic Bar Chairs:

The Danley™ SOG® (Slab-On-Ground) Bar Chairs are used to set the reinforcing bar and mesh to the correct position in deep slab residential, commercial and civil applications including roadways. The easy to use Clip-On feature on the Danley™ range of SOG® Bar Chairs ensures the chair remains in place on the mesh and suits reinforcing bar up to 20mm in diameter. The SOG® chairs are available in sizes which provide 100 mm, 110mm, 120mm, 130mm, 140mm and 150mm cover.

Clip-On Combination Bar Chair:

The easy to use clip-on mechanism ensures correct mesh placement is maintained when the crew is either walking on the mesh, or when the mesh is being repositioned or moved.



Danley™ Chairs & Spacers

Product Code	Description	AS/NZS 2425:2015 Load Rating (kgs)	QTY Bag/Pallet
BC2540	Combination Bar Chair 25/40mm	120	100/5000
BC5065C	Combination Bar Chair 50/65mm Clip On	120	100/6000
BC7590	Combination Bar Chair 75/90mm	120	100/4000
BC85100	Combination Bar Chair 85/100mm	120	100/4000
BC105110	Tall Combination Bar Chair 105/110	120	100/4000
BC115120	Tall Combination Bar Chair 115/120	120	100/2400
BC125130	Tall Combination Bar Chair 125/130	120	100/2400
BC135140	Tall Combination Bar Chair 135/140	120	100/4000
BC145150	Tall Combination Bar Chair 145/150	120	100/2400
BC155160	Tall Combination Bar Chair 155/160	120	50/2000
BC165170	Tall Combination Bar Chair 165/170	120	50/2000

Product Code	Description	AS/NZS 2425:2015 Load Rating (kgs)	QTY Bag/Pallet
BCSOG5065C	SOG Chair 50/65mm Clip-On (Combination)	120	100/5400
BSOG100C	SOG Chair 100mm Clip-On	300	100/3200
BSOG110C	SOG Chair 110mm Clip-On	300	100/3200
BSOG120C	SOG Chair 120mm Clip-On	300	100/2800
BSOG130C	SOG Chair 130mm Clip-On	300	100/2800
BSOG140C	SOG Chair 140mm Clip-On	300	100/2400
BSOG150C	SOG Chair 150mm Clip-On	300	100/2400



Danley™ BarGuard™

The Danley™ BarGuard™ reduces the chance of cuts and abrasions from exposed reinforcing bars up to 36mm in diameter. They are also able to fit over star pickets and most stakes on safety barriers. BarGuard™ is designed with unique internal fins which ensures sufficient engagement on either star pickets or reinforcing bar. The internal fins prevent the BarGuard™ from being easily dislodged when installed throughout the construction site. However, they are not designed for high load vertical impacts, such as someone falling from a height.

Danley™ ReoSok™

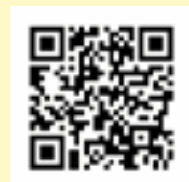
The Danley™ ReoSok™ is the simplest solution to providing protection from exposed or protruding reinforcing bars on-site. Providing both impalement protection and scratch resistance, the ReoSok™ caps are quick and easy to fit, economical and safe.

Please note that the ReoSok™ is not designed for high load vertical impacts, such as someone falling from height unless used in unison with a N12 lacer bar.

Danley™ LifeGuard™

The unique Danley™ LifeGuard™ Impalement Prevention Caps guard against reinforcing bars, and are ideally suited to sites that require added safety from potential falls from a height. The LifeGuard™ is a quick fit cap with a large diameter encapsulated metal insert. It also features a centrally raised boss that ensures that the reinforcing bar is retained in the sleeve preventing breakout through the side of the sleeve. The Danley™ LifeGuard™ complies with the world's most stringent impalement protection specification and test regime: The California Occupational Health & Safety [Cal/OHSA] Regulations – Section 344.90.

Product Code	Description	QTY Pack/Pallet
BARGY100	Bar Guard Safety Cap Yellow - 100	100/5000
REOSOK12-20	Reosok - suits bars 12mm to 20mm - Yellow (Bag of 50)	50/5000
REOSOK24-36	Reosok - suits bars/pickets 24mm to 36mm - Orange (Bag of 50)	50/2500
LIFEGUARD12-20	Lifeguard - suits bars 12mm to 20mm - Yellow (Bag of 50)	50/750
LIFEGUARD24-36	Lifeguard - suits bars/pickets 24mm to 36mm - Orange (Bag of 50)	50/750



Danley™ Safety Products

Who is ramsetreid™?

A Division of ITW Australia Pty Ltd, ramsetreid™ is the business that brings together the Ramset™, Reid™, Danley™, Modfix™ and Miska™ businesses across Australia and New Zealand.

Firmly focused on concrete construction in the Commercial, Precast, Tilt-Up, Industrial, Residential Flooring and Pavement markets in Australia and New Zealand, we are a business with a proud heritage of serving the market through our core brands – Ramset™, Reid™ and Danley™.

We are a local company with an extensive manufacturing, engineering, distribution and R&D footprint across Australia and New Zealand. As a division of ITW, we have immediate access to our sister companies globally. This allows us to develop or source the best product and service solutions for customers' construction projects.

www.danley.com.au

sales@danley.com.au

1300 DANLEY (1300 326 539)



ramsetreid™ 1 Ramset Drive, Chirnside Park, Victoria 3116

In the interests of product improvement, ramsetreid™ reserves the right to alter product specifications as required. Information included in this product catalogue is correct at time of printing. It is the responsibility of the user to ensure product selected is appropriate for its intended use. For further technical information go to www.ramsetreid.com or contact ramsetreid™ on the numbers indicated. ITW Australia Pty. Ltd. ABN 63 004 235 063 trading as ramsetreid™ © Copyright 2017™
Disclaimer: The information contained in this publication is intended to give a fair description of the products and their capabilities. No responsibility or liability by the manufacturers will be accepted for misuse, misreading or deviation from the recommended guidelines of these products. As new technology is introduced, or industry standards are altered, ramsetreid™ reserves the right to alter the information without notice.