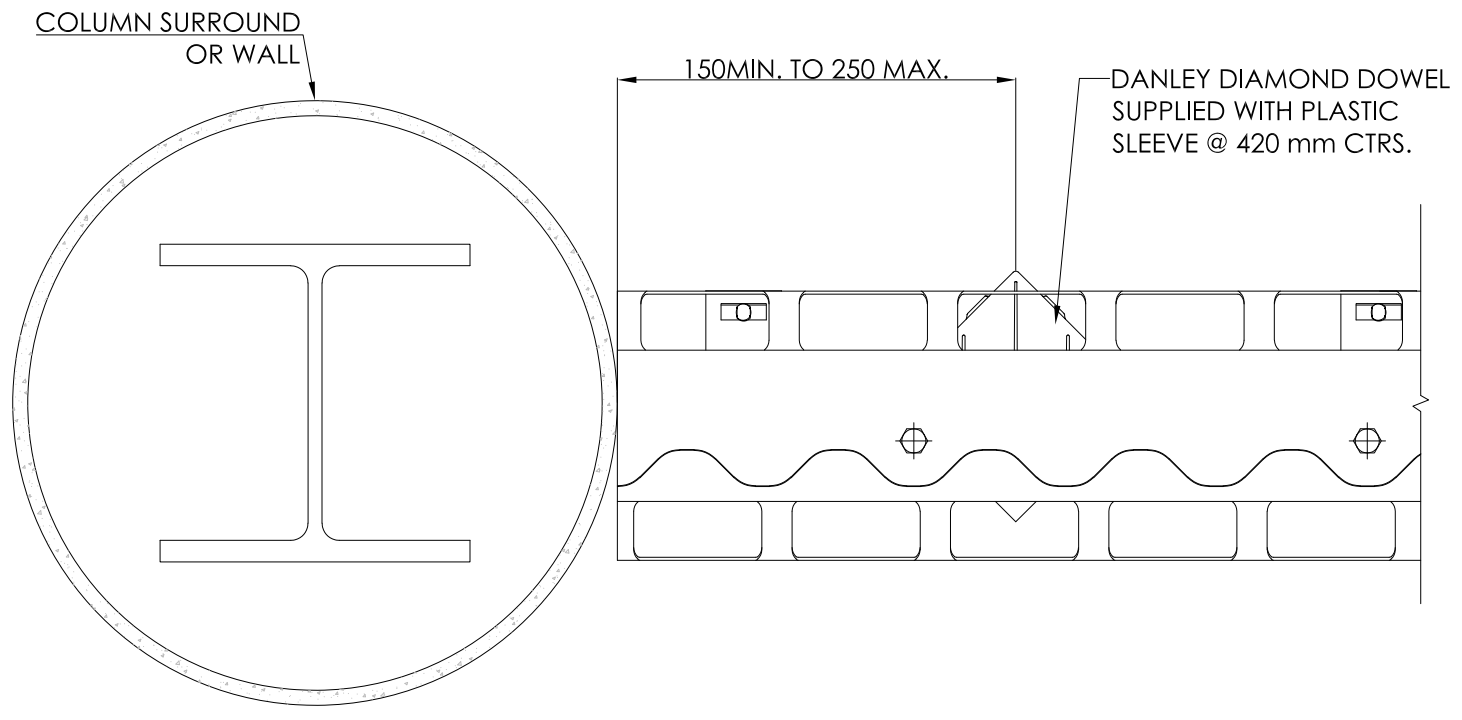
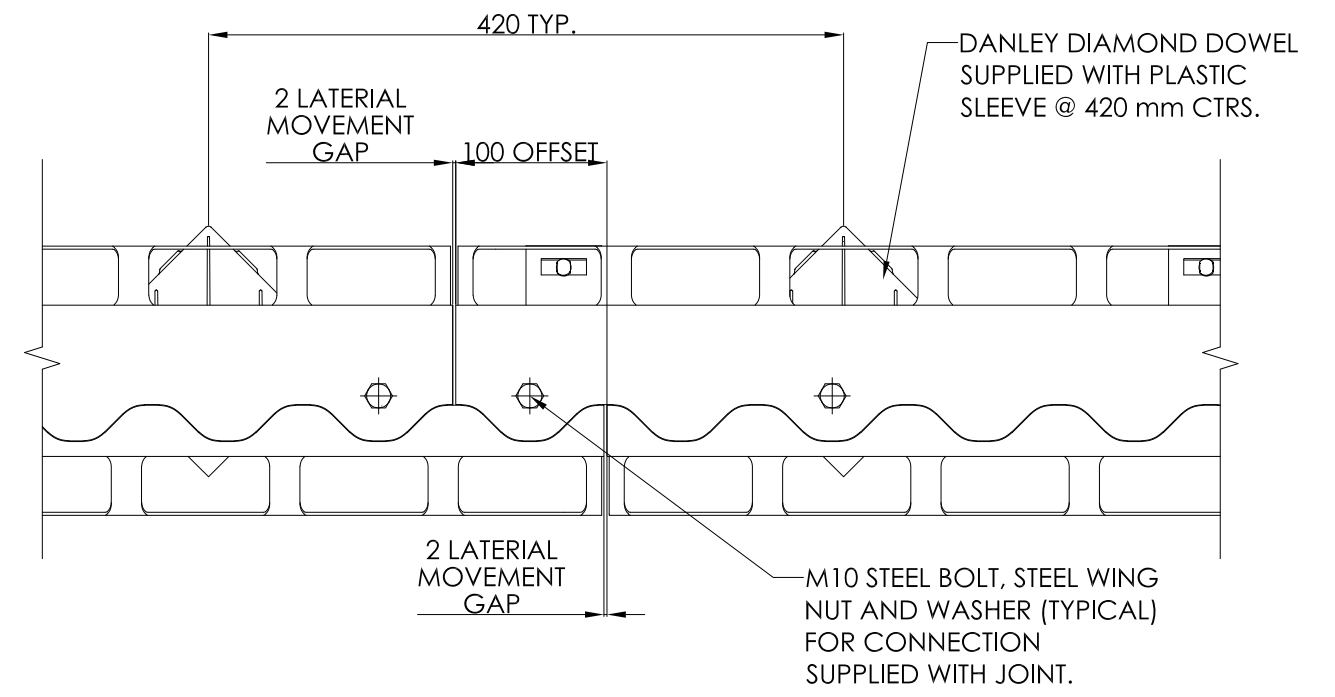


REVISIONS				
REV.	DESCRIPTION	D.C.P.	DATE	DRAWN BY
1	FOR DISTRIBUTION	MOC 60	01/06/21	GMASON

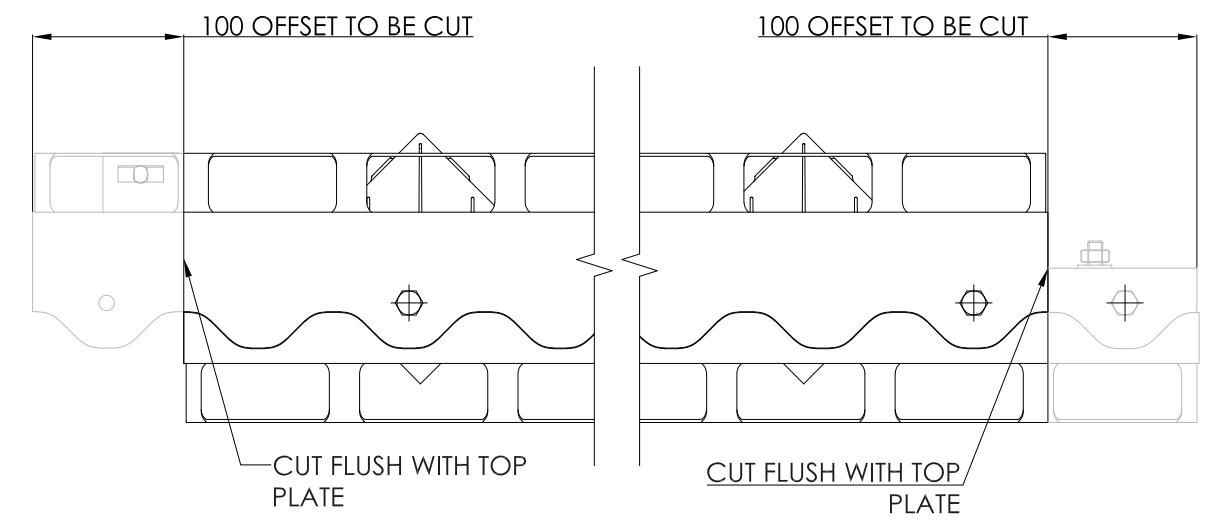


**WAVEPLATE ARMOUMATE TO COLUMN**  
SCALE: 1:5

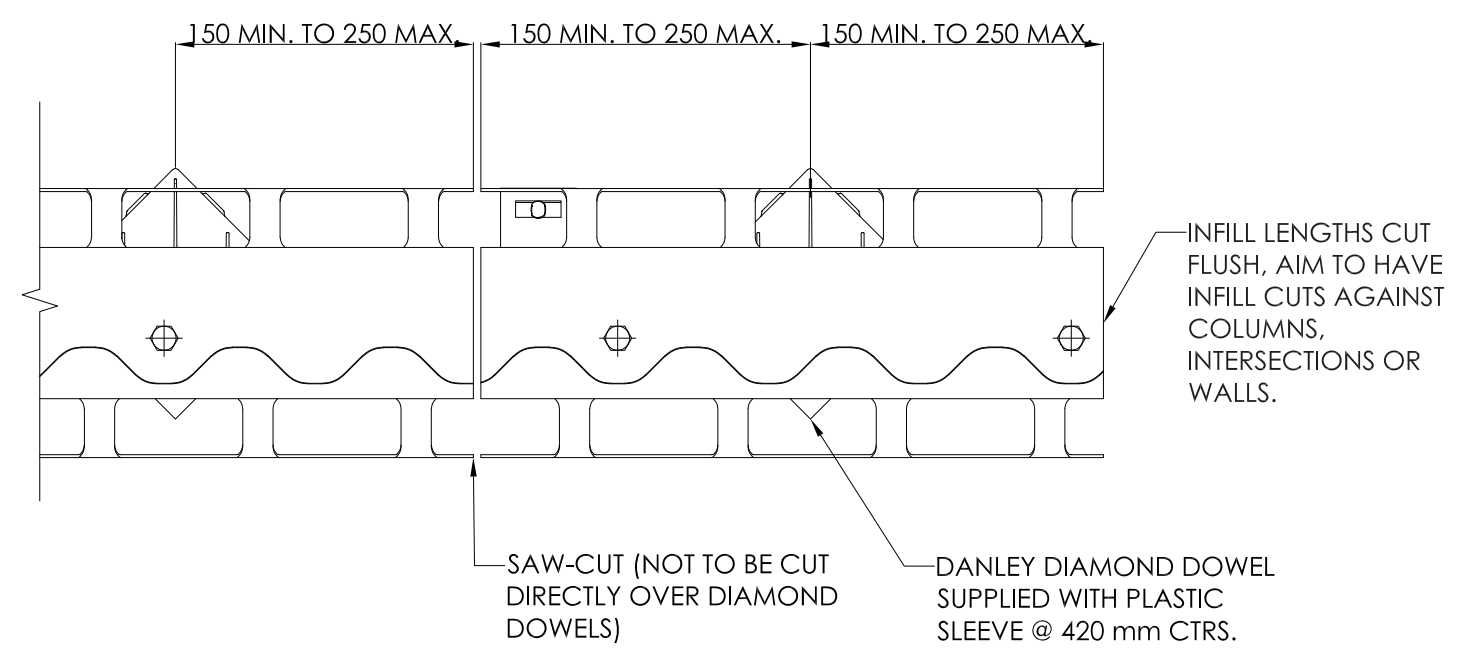


**WAVEPLATE ARMOUMATE DETAIL AT LAP**  
SCALE: 1:5

**NOTE:**  
1. ALL STEEL BOLTS TO BE REMOVED WITHIN 3-4 HOURS AFTER SECOND POUR.



**WAVEPLATE ARMOUMATE STANDARD INTERSECTION CONNECTION**  
SCALE: 1:5



**HYPER ARMOUMATE ONSITE CUTTING OF JOINT**  
SCALE: 1:5

**reid**  
Construction Systems  
**DANLEY**  
21 STEEL PLACE, MORNINGSID, QLD, 4170.  
A DIVISION OF ITW AUSTRALIA PTY. LTD.  
TEL: 1300 DANLEY (1300 326 539) FAX: (07) 3899 1733  
EML: sales@danley.com.au  
WEB: www.danley.com.au

THE INFORMATION CONTAINED IN THIS DRAWING IS THE SOLE PROPERTY OF REID CONSTRUCTION SYSTEMS (ITW) AUSTRALIA.  
DO NOT SCALE THIS DRAWING.

DESCRIPTION: WAVEPLATE™ ARMOUMATE™ CONNECTIONS			
SIGNED:	DRAWN: GMASON	VERIFIED: KRICHTER	APPROVED: DMANTLE
DATE:	01/06/21	04/06/21	08/06/21
CAD FILE: DAN-DWG-026 - WavePlate™ ArmourMate™ Connections			
DRAWING NO: <b>DAN-DWG-026</b>		SCALE: <b>1:5</b>	REVISION: <b>1</b>
SHEET: 1 OF 1		SIZE: A3	