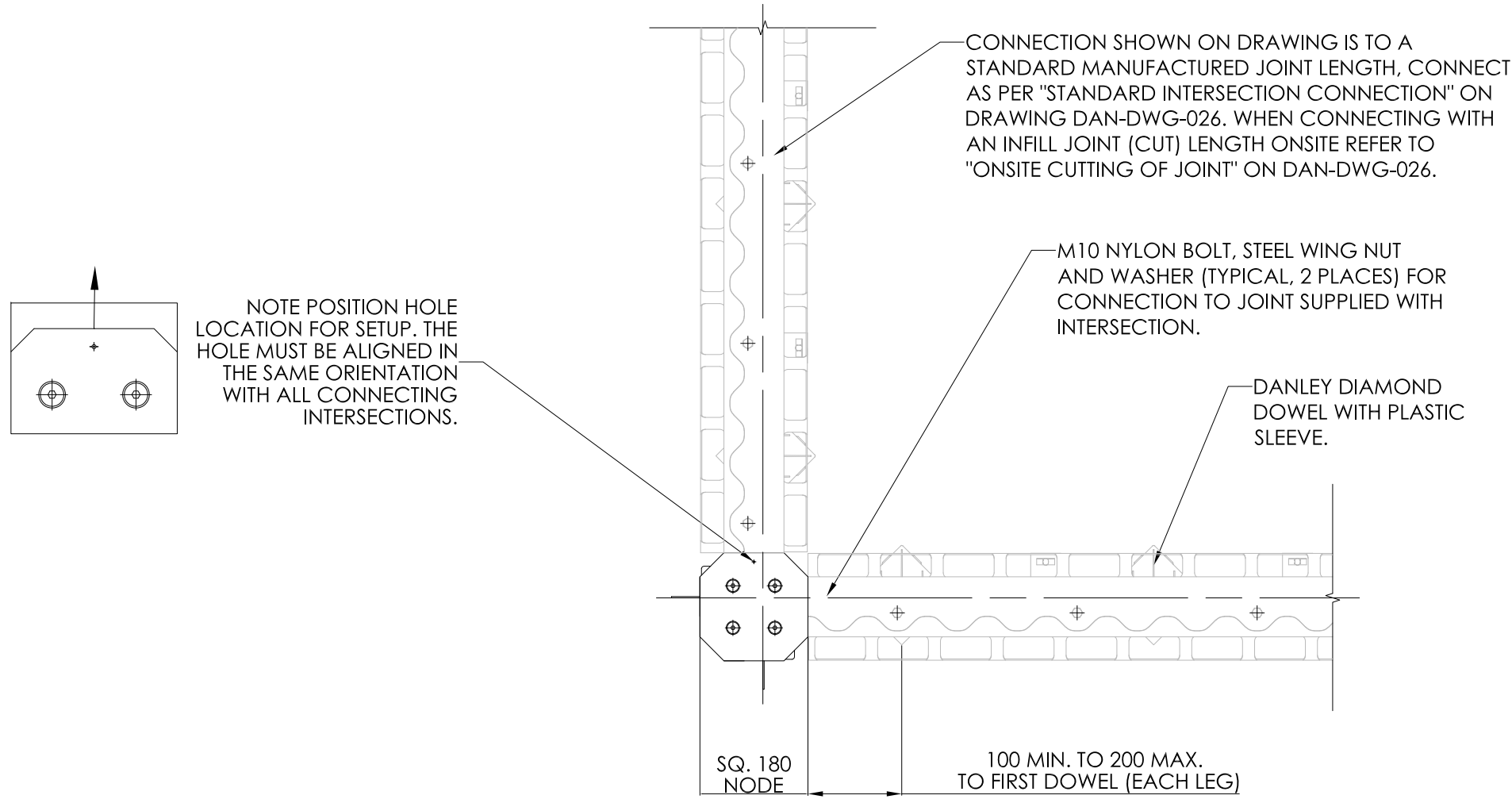


REVISIONS				
REV.	DESCRIPTION	D.C.P.	DATE	DRAWN BY
1	FOR DISTRIBUTION	MOC 60	01/06/21	GMASON



JOINT PLACEMENT

1. 4 x DIFFERENT 2-WAY JOINT LAYOUTS POSSIBLE. CONNECT JOINT TO REQUIRED SIDES OF INTERSECTION NODE.
2. DRAWN INTERSECTION LAYOUT CAN BE PLACED IN 4 ORIENTATIONS ONSITE (POSITION HOLE TO NORTH, EAST, SOUTH OR WEST).
3. JOINT ORIENTATION DEPENDS UPON THE FIRST POUR POSITION. FIRST POUR TO HAVE SLEEVES INTERNALLY ON ALL POUR SIDES.
4. ALL ADDITIONAL PROJECT INTERSECTIONS TO HAVE A MATCHING POSITION HOLE ORIENTATION.
5. POSITIONING OF JOINT LENGTHS REMAINS THE SAME IN RELATION TO POSITION HOLE FOR ALL ORIENTATIONS (DIRECTION ONLY CHANGES).
6. DOWEL SLEEVES SHOULD PREFERABLY BE ON FIRST POUR SIDE

NOTES:

1. LOCATION AND TYPE OF REINFORCING NOT SHOWN FOR CLARITY.
2. 100mm OFFSET ON JOINT TO BE CUT OFF STANDARD JOINTS BEFORE CONNECTING TO INTERSECTION NODE.
3. IF CONNECTION HOLES ARE NOT AVAILABLE (WITH INFILL LENGTHS), PLEASE DRILL HOLES IN JOINT SEPARATION PLATE TO SUIT THE CONNECTING INTERSECTION.

WAVEPLATE ARMOUMATE AT 2-WAY INTERSECTION
SCALE: 1:10

GENERAL NOTES:

WAVEPLATE™ ARMOUMATE™ INTERSECTION NODE DANLEY™ WAVEPLATE™ ARMOUMATE™ PRE-FABRICATED INTERSECTION NODE ALLOWS FOR CONTINUOUS JOINT CONNECTION THROUGH MULTIPLE SLABS. THE STANDARD NODE IS TYPICAL FOR 2-WAY, 3-WAY AND 4-WAY INTERSECTIONS IN DIFFERENT LAYOUT CONFIGURATIONS. AVAILABLE IN BLACK OR GALVANISED OPTIONS TO SUIT STANDARD JOINT SIZES.

DESCRIPTION: WAVEPLATE™ ARMOUMATE™ 2-WAY INTERSECTION			
SIGNED:	DRAWN: GMASON	VERIFIED: KRICHTER	APPROVED: DMANTLE
DATE:	01/06/21	04/06/21	08/06/21
CAD FILE: DAN-DWG-025 - WavePlate™ ArmourMate™ 2-Way Intersection			
DRAWING NO: DAN-DWG-025		SCALE: 1:5	REVISION: 1
SHEET: 2 OF 3		SIZE: A3	

DO NOT SCALE THIS DRAWING.