

Danley™ Keyjoint™

Technical Data Sheet

April 2023

Product Description

The Keyjoint System facilitates greater control of joints in concrete slabs enabling loads to be transferred between adjoining slabs while allowing lateral movement and limiting vertical differential deflection, that may potentially cause tripping hazards. Keyjoint capping profiles are sold separately.

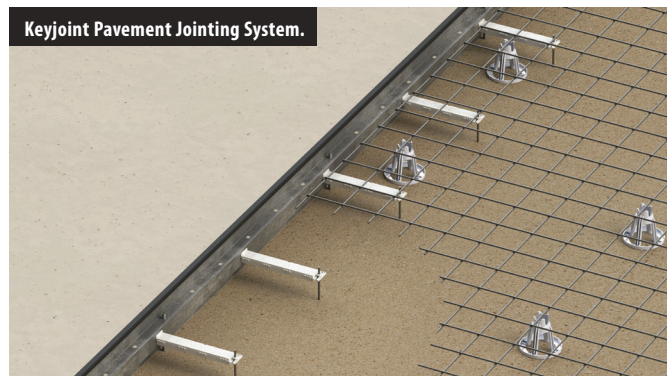
Keyjoint Expanda™ is supplied pre-assembled with 5mm close cell expansion foam that provides for thermal expansion of the concrete.



Note: Keyjoint & Expanda profiles pictured with optional capping - sold separately.

Features & Benefits

- Galvabond® steel “stay-in-place” formwork system for concrete slabs and pavements.
- Allows lateral movement between the slabs, but limits vertical differential deflection between the slabs.
- Tighter key taper, limits differential vertical deflection than competitive products.
- Pour-through design allows for continuous concrete placement.
- Unique “drive-n-twist” stake system to make installation simple.
- Provides a more uniform joint line than conventional timber formwork.
- Keyjoint features knock-out holes for 16mm or 20mm square dowels every 150mm. This provides flexibility in centre spacings at 150mm, 300mm, 450mm and 600mm.
- Available in standard 3m lengths to suit four slab thicknesses.
- Ideal for light traffic areas.
- Companion capping available for 3mm recess, 10mm recess, or permanent capping with Rip-A-Strip™ in 2 different colours.
- Fast & easy to install, save time & money on site.
- Keyjoint Expanda™ is supplied with 5mm close cell expansion foam.



Environment

- Industrial Pavements
- Residential Pavements

Concrete Slab Joint Dynamics

Differential deflection between slabs causes:

- Fatigue between joints.
- Concrete failure at joints.
- Damage to equipment traversing joints.
- Remedial repair.
- High repair costs.

Danley Keyjoint provides...

- Minimal differential deflection that cause trip hazards.
- Minimises concrete failure at joints.
- Quality joints that reduced damage to equipment.
- Joint integrity and reduces the need for frequent joint repairs or maintenance.



Note: Danley™ Keyjoint™ may not be suitable for use in pavements in highly corrosive environments including (but not limited to): Chlorinated or salt-water swimming pools, Coastal or Marine environments, Waste Water Treatment plants, Rural and/or farming applications exposed to high levels of nitrates (including fertilizer), Pavements exposed to Hydrochloric acid.

Danley™ Keyjoint™

Pavement
Jointing
System

Technical Data Sheet

April 2023

Product Specifications

Keyjoint

Part #	Description	Pack Qty	Weight KG's
KJ100X3M4STK	Key Joint 100mm x 3m with 4 x 350mm Stakes	20 & 50	160.0
KJ125X3M4STK	Key Joint 125mm x 3m with 4 x 350mm Stakes	20 & 50	180.0
KJ150X3M4STK	Key Joint 150mm x 3m with 4 x 350mm Stakes	20 & 50	201.0
KJ200X3M4STK	Key Joint 200mm x 3m with 4 x 450mm Stakes	20 & 50	235.0
KJ250X3M4STK	Key Joint 250mm x 3m with 4 x 550mm Stakes	20 & 50	255.0



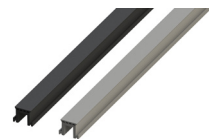
Keyjoint Expanda™

Part #	Description	Pack Qty	Weight KG's
KJEXP100X3M4STK	Key Joint Expanda 100mm x 3mtr with 4 x 350mm Stakes - Foam 5mm	10	35.0
KJEXP125X3M4STK	Key Joint Expanda 125mm x 3mtr with 4 x 350mm Stakes - Foam 5mm	10	44.0
KJEXP150X3M4STK	Key Joint Expanda 150mm x 3mtr with 4 x 350mm Stakes - Foam 5mm	10	52.5
KJEXP200X3M4STK	Key Joint Expanda 200mm x 3mtr with 4 x 450mm Stakes - Foam 5mm	5	35.0
KJEXP250X3M4STK	Key Joint Expanda 250mm x 3mtr with 4 x 550mm Stakes - Foam 5mm	5	43.8



Keyjoint Capping

Part #	Description	Pack Qty	Weight KG's
KJCSTD10X025BLA	Keyjoint Capping - 10mm Standard Removable (25mtr roll) C	1	35.0
KJCBLK12X025BLA	Keyjoint Capping - 12mm Block Removable (25mtr roll) B	1	44.0
KJCRIP13X025BLA	Keyjoint Capping - 13mm Rip A Strip (25mtr roll) - Black A	1	52.5
KJCRIP13X025GRE	Keyjoint Capping - 13mm Rip A Strip (25mtr roll) - Grey A	1	35.0

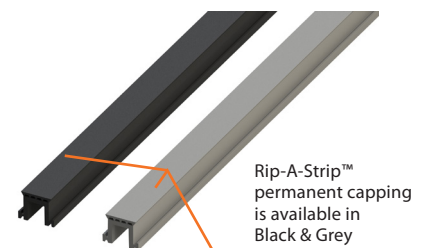


Keyjoint Capping

Keyjoint Capping profiles are available in 2 styles: Removable Capping and Rip-A-Strip™ Permanent Capping. Removable Keyjoint Capping profiles are available in 10mm wide profile providing a 3mm recess, and a 12mm wide profile, which provides a 10mm recess. Once removed, the capping provides a recess for cold-applied sealants.

Rip-A-Strip™ permanent capping is available in 2 colours: grey & black.

Rip-A-Strip™ gives you efficient crack control with an attractive architectural finish.



Rip-A-Strip™ permanent capping is available in Black & Grey

AUS: 1300 326 539 | NZ: 0800 88 22 55 | E: sales@danley.com.au | W: www.danley.com.au