

Zealseal™ 2000 System

For Carpark, Service & Loading area's, Warehouses

(For road and bridge applications see Miska Zealseal™ data sheet).



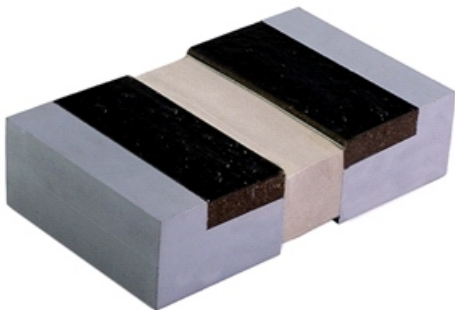
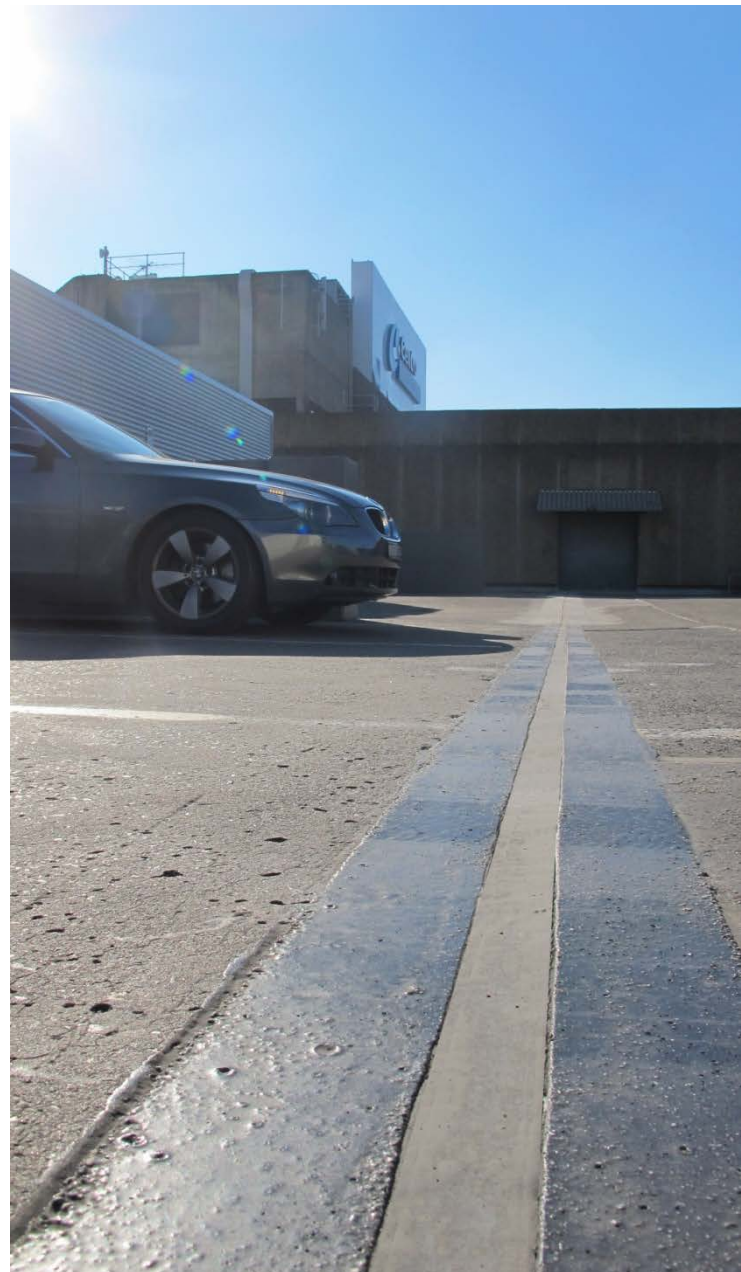
The Miska Zealseal™ 2000 system provides a waterproof, trafficable seal utilizing Zealcrete LV™ Epoxy elastomeric concrete as an armor nosing to support the Zealseal™ expansion foam.

Zealseal™ Waterproofing barrier

Zealseal™ is a nitrogen blown, closed cell, cross linked polyethylene material which conforms to ASTM D-1056, Type 2 Class B, Grade 3 specifications. It is a preformed, low density, resilient material that is UV stabilized. Manufactured in such a way that it is free of toxins, non reactive and chemically inert. Zealseal™ is also compatible with other construction materials and combined with its resistance to abrasion, oxidation and most chemicals, is ideal as a waterproof, expansion joint material

Key Features

- Capacity for 60% compression (percentages based on initial seal width selection)
- Capacity for 100% horizontal and vertical shear
- Does not support flame and is self extinguishing
- Large temperature operating range with no thermal shrinkage.
- Manufactured in such a way that it is free of toxins, non reactive and chemically inert.
- Weather and UV resistant
- On site welding of joins, intersections, upturns and different seal sizes. (A monolithic waterproof system)
- Quick and easy installation
- Enhanced bond line design increases bond strength to all surfaces. Supplied with approximate 3mm x 3mm bond surface grooves @ 10mm centres.
- Bonded using Zealbond™. (See overleaf for details)
- Cleanup with Zealcleaner™



Disclaimer: The information contained in this publication is intended to give a fair description of the products and their capabilities. No responsibility or liability by the manufacturers will be accepted for misuse, misreading or deviation from the recommended guidelines of these products. As new technology is introduced, or industry standards are altered, Miska reserves the right to alter the information without notice.

Rev 03
Feb 2011

ITW Construction Systems
(A division of ITW Australia P/L)
Tel: 1300 663 521
Web: www.miska.com.au

Zealseal™ 2000 System

For Carparks, Service & Loading area's, Warehouses

(For road and bridge applications see Miska Zealseal™ data sheet).



Zealseal™ Sizing

The table across is a guide to the sizing and recommended movement ranges. For full details on selecting the correct Zealseal™ size, refer to the Miska data sheet: "Zealseal Guide to Sizing"

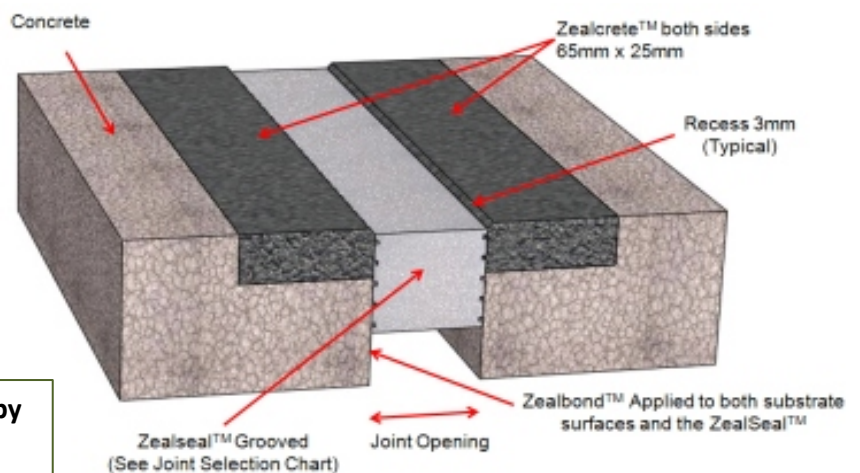
Zealcrete LV™

Zealcrete LV™ is a Fast Setting, , moisture insensitive, 100% solid, low viscosity two-component Epoxy elastomeric concrete. Zealcrete LV™ is designed as an expansion joint header and high impact nosing for Bridge and Roads applications. Zealcrete LV™ is designed to preserve and protect concrete decks and substructures by absorbing impact, preventing water absorbson and ingress of chemicias and eliminating spalled edges on joint lines.

Please contact Miska for specific Blockout sizing for your installation



Seal	Nominal Gap Size mm	Car Park, Public Spaces and Architectural Applications		
Note: Product sizing is based on a mid range temperature of chart @ 20° C				
		Min Gap	Max Gap	Seal Depth
ZS25	19	10	32	50
ZS30	23	12	39	50
ZS35	26	14	45	50
ZS40	30	16	52	50
ZS45	34	18	59	50
ZS50	38	20	65	50
ZS55	41	22	72	50
ZS60	45	24	78	50
ZS65	49	26	85	50
ZS70	52	28	91	75
ZS75	56	30	98	75
ZS80	60	32	104	75
ZS85	64	34	111	75
ZS90	67	36	117	100
ZS100	75	40	130	100



The Miska Zealseal™ systems must only be installed by certified Miska Zealseal™. Installers. Please contact your Miska representative for details.

Zealbond™

Zealbond™ is a 100% solids, moisture insensitive, two component, modified epoxy adhesive designed for bonding Zealseal™ to construction materials including Zealcrete LV™ concrete, steel, wood and other construction materials. Zealbond™ meets ASTM C-881, Type 1 & 11, Grade 2, Class B & C.



Zealcleaner™

Zealcleaner™ is a Zero-VOC Clean up solvent designed to be an industrial grade cleaner that is environmentally friendly. Zealcleaner™ is a low viscosity, water soluble cleaner and degreaser that is an alternative to flammable cleaners and solvents. It will dissolve and aid clean up of most uncured epoxies, urethanes, paints, and other difficult to remove substances. The low evaporation rate allows the product to remain on the surface rather than flashing off into the air, minimizing the required amount for the job. *use white cotton rags.

